

Anti-Podocan Antibody

Rabbit polyclonal antibody to Podocan
Catalog # AP61347

Product Information

| | |
|--------------------------|------------------------|
| Application | WB, IHC |
| Primary Accession | Q7Z5L7 |
| Other Accession | Q7TQ62 |
| Reactivity | Human, Mouse |
| Host | Rabbit |
| Clonality | Polyclonal |
| Calculated MW | 68976 |

Additional Information

| | |
|---------------------------|--|
| Gene ID | 127435 |
| Other Names | SLRR5A; Podocan |
| Target/Specificity | KLH-conjugated synthetic peptide encompassing a sequence within the C-term region of human Podocan. The exact sequence is proprietary. |
| Dilution | WB~~WB (1/500 - 1/1000), IHC (1/50 - 1/200) IHC~~WB (1/500 - 1/1000), IHC (1/50 - 1/200) |
| Format | Liquid in 0.42% Potassium phosphate, 0.87% Sodium chloride, pH 7.3, 30% glycerol, and 0.09% (W/V) sodium azide. |
| Storage | Store at -20 °C.Stable for 12 months from date of receipt |

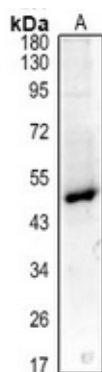
Protein Information

| | |
|--------------------------|--|
| Name | PODN |
| Synonyms | SLRR5A |
| Function | Negatively regulates cell proliferation and cell migration. |
| Cellular Location | [Isoform 1]: Secreted, extracellular space, extracellular matrix [Isoform 3]: Cytoplasm. |
| Tissue Location | Kidney, heart, liver, pancreas and vascular smooth muscle cells. Also detected in aortic intima (at protein level) |

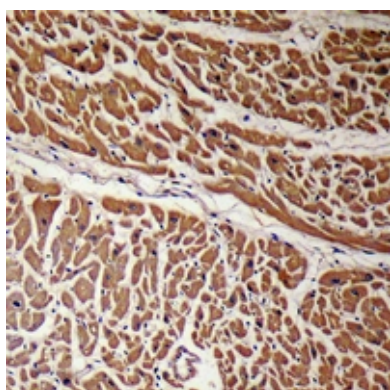
Background

KLH-conjugated synthetic peptide encompassing a sequence within the C-term region of human Podocan. The exact sequence is proprietary.

Images



Western blot analysis of Podocan expression in MEF (A) whole cell lysates.



Immunohistochemical analysis of Podocan staining in human heart formalin fixed paraffin embedded tissue section. The section was pre-treated using heat mediated antigen retrieval with sodium citrate buffer (pH 6.0). The section was then incubated with the antibody at room temperature and detected using an HRP conjugated compact polymer system. DAB was used as the chromogen. The section was then counterstained with haematoxylin and mounted with DPX.

Please note: All products are 'FOR RESEARCH USE ONLY. NOT FOR USE IN DIAGNOSTIC OR THERAPEUTIC PROCEDURES'.