

# Anti-Alpha-internexin Antibody

Rabbit polyclonal antibody to Alpha-internexin

Catalog # AP61348

## Product Information

---

<b>Application</b>	WB
<b>Primary Accession</b>	<a href="#">Q16352</a>
<b>Other Accession</b>	<a href="#">P46660</a>
<b>Reactivity</b>	Human, Mouse, Rat, Bovine
<b>Host</b>	Rabbit
<b>Clonality</b>	Polyclonal
<b>Calculated MW</b>	55391

## Additional Information

---

<b>Gene ID</b>	9118
<b>Other Names</b>	NEF5; Alpha-internexin; Alpha-Inx; 66 kDa neurofilament protein; NF-66; Neurofilament-66; Neurofilament 5
<b>Target/Specificity</b>	KLH-conjugated synthetic peptide encompassing a sequence within the center region of human Alpha-internexin. The exact sequence is proprietary.
<b>Dilution</b>	WB~~WB (1/500 - 1/1000)
<b>Format</b>	Liquid in 0.42% Potassium phosphate, 0.87% Sodium chloride, pH 7.3, 30% glycerol, and 0.09% (W/V) sodium azide.
<b>Storage</b>	Store at -20 °C.Stable for 12 months from date of receipt

## Protein Information

---

<b>Name</b>	INA
<b>Synonyms</b>	NEF5
<b>Function</b>	Class-IV neuronal intermediate filament that is able to self- assemble. It is involved in the morphogenesis of neurons. It may form an independent structural network without the involvement of other neurofilaments or it may cooperate with NEFL to form the filamentous backbone to which NEFM and NEFH attach to form the cross-bridges. May also cooperate with the neuronal intermediate filament protein PRPH to form filamentous networks (By similarity).
<b>Tissue Location</b>	Found predominantly in adult CNS.

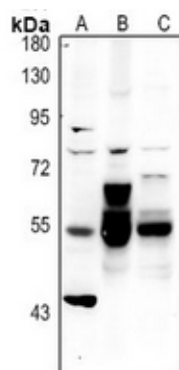
## Background

---

KLH-conjugated synthetic peptide encompassing a sequence within the center region of human Alpha-internexin. The exact sequence is proprietary.

## Images

---



Western blot analysis of Alpha-internexin expression in U87MG (A), mouse brain (B), rat brain (C) whole cell lysates.

Please note: All products are 'FOR RESEARCH USE ONLY. NOT FOR USE IN DIAGNOSTIC OR THERAPEUTIC PROCEDURES'.