

# Anti-ITIH4 Antibody

Rabbit polyclonal antibody to ITIH4

Catalog # AP61349

## Product Information

---

Application	WB
Primary Accession	<a href="#">Q14624</a>
Reactivity	Human, Rat
Host	Rabbit
Clonality	Polyclonal
Calculated MW	103357

## Additional Information

---

Gene ID	3700
Other Names	IHRP; ITIHL1; PK120; Inter-alpha-trypsin inhibitor heavy chain H4; ITI heavy chain H4; ITI-HC4; Inter-alpha-inhibitor heavy chain 4; Inter-alpha-trypsin inhibitor family heavy chain-related protein; IHRP; Plasma kallikrein sensitive glycoprotein 120; Gp120; PK-120
Target/Specificity	KLH-conjugated synthetic peptide encompassing a sequence within the center region of human ITIH4. The exact sequence is proprietary.
Dilution	WB~~WB (1/500 - 1/1000)
Format	Liquid in 0.42% Potassium phosphate, 0.87% Sodium chloride, pH 7.3, 30% glycerol, and 0.09% (W/V) sodium azide.
Storage	Store at -20 °C.Stable for 12 months from date of receipt

## Protein Information

---

Name	ITIH4
Synonyms	IHRP, ITIHL1, PK120
Function	Type II acute-phase protein (APP) involved in inflammatory responses to trauma. May also play a role in liver development or regeneration.
Cellular Location	Secreted.
Tissue Location	Liver specific.

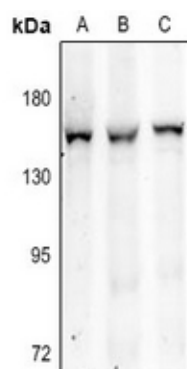
## Background

---

KLH-conjugated synthetic peptide encompassing a sequence within the center region of human ITIH4. The exact sequence is proprietary.

## Images

---



Western blot analysis of ITIH4 expression in rat liver (A), HepG2 (B), H1792 (C) whole cell lysates.

Please note: All products are 'FOR RESEARCH USE ONLY. NOT FOR USE IN DIAGNOSTIC OR THERAPEUTIC PROCEDURES'.