

Anti-GPR150 Antibody

Rabbit polyclonal antibody to GPR150

Catalog # AP61355

Product Information

Application	WB, IF/IC
Primary Accession	Q8NGU9
Other Accession	Q8BL07
Reactivity	Human, Mouse
Host	Rabbit
Clonality	Polyclonal
Calculated MW	46353

Additional Information

Gene ID	285601
Other Names	Probable G-protein coupled receptor 150
Target/Specificity	Recognizes endogenous levels of GPR150 protein.
Dilution	WB~~WB (1/500 - 1/1000), IF/IC (1/100 - 1/500) IF/IC~~N/A
Format	Liquid in 0.42% Potassium phosphate, 0.87% Sodium chloride, pH 7.3, 30% glycerol, and 0.09% (W/V) sodium azide.
Storage	Store at -20 °C.Stable for 12 months from date of receipt

Protein Information

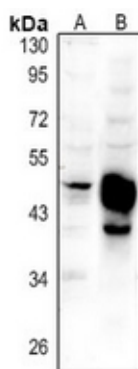
Name	GPR150
Function	Orphan receptor.
Cellular Location	Cell membrane; Multi-pass membrane protein.

Background

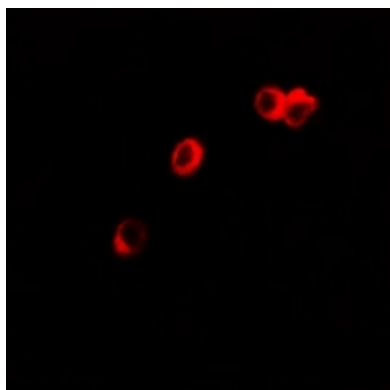
KLH-conjugated synthetic peptide encompassing a sequence within the center region of human GPR150. The exact sequence is proprietary.

Images

Western blot analysis of GPR150 expression in HEK293T



(A), mouse kidney (B) whole cell lysates.



Immunofluorescent analysis of GPR150 staining in HepG2 cells. Formalin-fixed cells were permeabilized with 0.1% Triton X-100 in TBS for 5-10 minutes and blocked with 3% BSA-PBS for 30 minutes at room temperature. Cells were probed with the primary antibody in 3% BSA-PBS and incubated overnight at 4 °C in a humidified chamber. Cells were washed with PBST and incubated with a Alexa Fluor 594-conjugated secondary antibody (red) in PBS at room temperature in the dark.

Please note: All products are 'FOR RESEARCH USE ONLY. NOT FOR USE IN DIAGNOSTIC OR THERAPEUTIC PROCEDURES'.