

Anti-RRH Antibody

Rabbit polyclonal antibody to RRH
Catalog # AP61357

Product Information

Application	WB
Primary Accession	O14718
Reactivity	Human
Host	Rabbit
Clonality	Polyclonal
Calculated MW	37423

Additional Information

Gene ID	10692
Other Names	Visual pigment-like receptor peropsin
Target/Specificity	Recognizes endogenous levels of RRH protein.
Dilution	WB~~WB (1/500 - 1/1000)
Format	Liquid in 0.42% Potassium phosphate, 0.87% Sodium chloride, pH 7.3, 30% glycerol, and 0.09% (W/V) sodium azide.
Storage	Store at -20 °C.Stable for 12 months from date of receipt

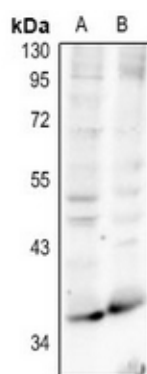
Protein Information

Name	RRH
Function	May play a role in rpe physiology either by detecting light directly or by monitoring the concentration of retinoids or other photoreceptor-derived compounds.
Cellular Location	Membrane; Multi-pass membrane protein
Tissue Location	Found only in the eye, where it is localized to the retinal pigment epithelium (RPE). In the RPE, it is localized to the microvilli that surround the photoreceptor outer segments

Background

KLH-conjugated synthetic peptide encompassing a sequence within the center region of human RRH. The exact sequence is proprietary.

Images



Western blot analysis of RRH expression in MCF7 (A), PC3 (B) whole cell lysates.

Please note: All products are 'FOR RESEARCH USE ONLY. NOT FOR USE IN DIAGNOSTIC OR THERAPEUTIC PROCEDURES'.