

Anti-TRHR Antibody

Rabbit polyclonal antibody to TRHR
Catalog # AP61359

Product Information

Application	WB, IF/IC
Primary Accession	P34981
Other Accession	P21761
Reactivity	Human, Mouse, Rat
Host	Rabbit
Clonality	Polyclonal
Calculated MW	45085

Additional Information

Gene ID	7201
Other Names	Thyrotropin-releasing hormone receptor; TRH-R; Thyroliberin receptor
Target/Specificity	KLH-conjugated synthetic peptide encompassing a sequence within the center region of human TRHR. The exact sequence is proprietary.
Dilution	WB~~WB (1/500 - 1/1000), IF/IC (1/100 - 1/500) IF/IC~~N/A
Format	Liquid in 0.42% Potassium phosphate, 0.87% Sodium chloride, pH 7.3, 30% glycerol, and 0.09% (W/V) sodium azide.
Storage	Store at -20 °C.Stable for 12 months from date of receipt

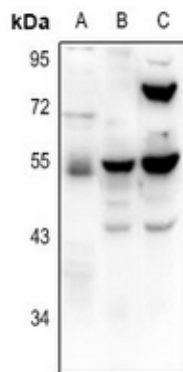
Protein Information

Name	TRHR
Function	Receptor for thyrotropin-releasing hormone (TRH). Upon ligand binding, this G-protein-coupled receptor triggers activation of the phosphatidylinositol (IP3)-calcium-protein kinase C (PKC) pathway.
Cellular Location	Cell membrane; Multi-pass membrane protein

Background

KLH-conjugated synthetic peptide encompassing a sequence within the center region of human TRHR. The exact sequence is proprietary.

Images



Western blot analysis of TRHR expression in U87MG (A), mouse brain (B), mouse kidney (C) whole cell lysates.



Immunofluorescent analysis of TRHR staining in A549 cells. Formalin-fixed cells were permeabilized with 0.1% Triton X-100 in TBS for 5-10 minutes and blocked with 3% BSA-PBS for 30 minutes at room temperature. Cells were probed with the primary antibody in 3% BSA-PBS and incubated overnight at 4 °C in a humidified chamber. Cells were washed with PBST and incubated with a Alexa Fluor 594-conjugated secondary antibody (red) in PBS at room temperature in the dark.

Please note: All products are 'FOR RESEARCH USE ONLY. NOT FOR USE IN DIAGNOSTIC OR THERAPEUTIC PROCEDURES'.