

# Anti-Flotillin 2 Antibody

Rabbit polyclonal antibody to Flotillin 2  
Catalog # AP61366

## Product Information

---

Application	WB
Primary Accession	<a href="#">Q14254</a>
Other Accession	<a href="#">Q60634</a>
Reactivity	Human, Mouse, Rat, Zebrafish
Host	Rabbit
Clonality	Polyclonal
Calculated MW	47064

## Additional Information

---

Gene ID	2319
Other Names	ESA1; M17S1; Flotillin-2; Epidermal surface antigen; ESA; Membrane component chromosome 17 surface marker 1
Target/Specificity	Recognizes endogenous levels of Flotillin 2 protein.
Dilution	WB~~WB (1/500 - 1/1000)
Format	Liquid in 0.42% Potassium phosphate, 0.87% Sodium chloride, pH 7.3, 30% glycerol, and 0.09% (W/V) sodium azide.
Storage	Store at -20 °C.Stable for 12 months from date of receipt

## Protein Information

---

Name	FLOT2
Synonyms	ESA1, M17S1
Function	May act as a scaffolding protein within caveolar membranes, functionally participating in formation of caveolae or caveolae-like vesicles. May be involved in epidermal cell adhesion and epidermal structure and function.
Cellular Location	Cell membrane; Peripheral membrane protein. Membrane, caveola; Peripheral membrane protein. Endosome Membrane; Lipid-anchor. Note=Membrane- associated protein of caveolae
Tissue Location	In skin, expressed in epidermis and epidermal appendages but not in dermis. Expressed in all layers of the epidermis except the basal layer. In hair follicles, expressed in the suprabasal layer but not the basal layer. Also expressed in melanoma and carcinoma cell lines, fibroblasts and foreskin melanocytes

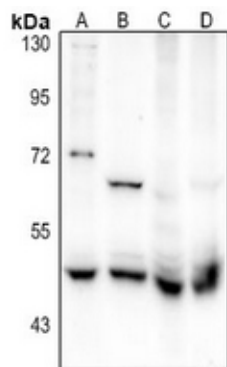
## Background

---

KLH-conjugated synthetic peptide encompassing a sequence within the center region of human Flotillin 2. The exact sequence is proprietary.

## Images

---



Western blot analysis of Flotillin 2 expression in A375 (A), SCC7 (B), mouse brain (C), C6 (D) whole cell lysates.

Please note: All products are 'FOR RESEARCH USE ONLY. NOT FOR USE IN DIAGNOSTIC OR THERAPEUTIC PROCEDURES'.