

Anti-BMP1 Antibody

Rabbit polyclonal antibody to BMP1

Catalog # AP61372

Product Information

Application	WB, IHC
Primary Accession	P13497
Other Accession	P98063
Reactivity	Human, Mouse, Rat
Host	Rabbit
Clonality	Polyclonal
Calculated MW	111249

Additional Information

Gene ID	649
Other Names	PCOLC; Bone morphogenetic protein 1; BMP-1; Mammalian tolloid protein; mTld; Procollagen C-proteinase; PCP
Target/Specificity	Recognizes endogenous levels of BMP1 protein.
Dilution	WB~~WB (1/500 - 1/1000), IHC (1/50 - 1/200) IHC~~WB (1/500 - 1/1000), IHC (1/50 - 1/200)
Format	Liquid in 0.42% Potassium phosphate, 0.87% Sodium chloride, pH 7.3, 30% glycerol, and 0.09% (W/V) sodium azide.
Storage	Store at -20 °C.Stable for 12 months from date of receipt

Protein Information

Name	BMP1
Synonyms	PCOLC
Function	<p>Metalloprotease that plays key roles in regulating the formation of the extracellular matrix (ECM) via processing of various precursor proteins into mature functional enzymes or structural proteins (PubMed:33206546). Thereby participates in several developmental and physiological processes such as cartilage and bone formation, muscle growth and homeostasis, wound healing and tissue repair (PubMed:32636307, PubMed:33169406). Roles in ECM formation include cleavage of the C-terminal propeptides from procollagens such as procollagen I, II and III or the proteolytic activation of the enzyme lysyl oxidase LOX, necessary to formation of covalent cross- links in collagen and elastic fibers (PubMed:31152061, PubMed:33206546). Additional substrates include matricellular thrombospondin-1/THBS1 whose</p>

cleavage leads to cell adhesion disruption and TGF-beta activation (PubMed:[32636307](#)).

Cellular Location

Golgi apparatus, trans-Golgi network. Secreted, extracellular space, extracellular matrix. Secreted. Note=Co-localizes with POSTN in the Golgi.

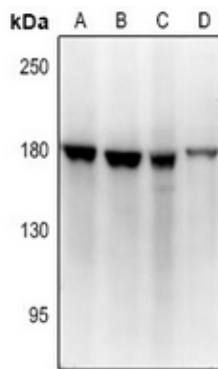
Tissue Location

Ubiquitous.

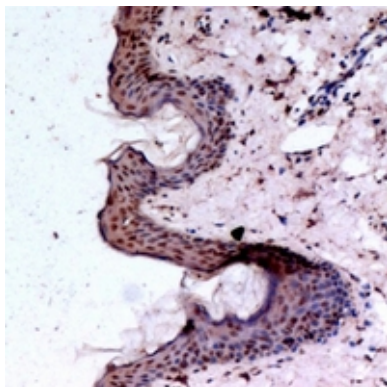
Background

KLH-conjugated synthetic peptide encompassing a sequence within the N-term region of human BMP1. The exact sequence is proprietary.

Images



Western blot analysis of BMP1 expression in H9C2 (A), MEF (B), HEK293T (C), A549 (D) whole cell lysates.



Immunohistochemical analysis of BMP1 staining in human skin formalin fixed paraffin embedded tissue section. The section was pre-treated using heat mediated antigen retrieval with sodium citrate buffer (pH 6.0). The section was then incubated with the antibody at room temperature and detected using an HRP conjugated compact polymer system. DAB was used as the chromogen. The section was then counterstained with haematoxylin and mounted with DPX.

Please note: All products are 'FOR RESEARCH USE ONLY. NOT FOR USE IN DIAGNOSTIC OR THERAPEUTIC PROCEDURES'.