

# Anti-HMGXB3 Antibody

Rabbit polyclonal antibody to HMGXB3

Catalog # AP61385

## Product Information

Application	WB, IHC
Primary Accession	<a href="#">Q12766</a>
Reactivity	Human
Host	Rabbit
Clonality	Polyclonal
Calculated MW	141106

## Additional Information

Gene ID	22993
Other Names	KIAA0194; SMF; HMG domain-containing protein 3; HMG box-containing protein 3; Protein SMF
Target/Specificity	KLH-conjugated synthetic peptide encompassing a sequence within the N-term region of human HMGXB3. The exact sequence is proprietary.
Dilution	WB~~WB (1/500 - 1/1000), IHC (1/50 - 1/200) IHC~~WB (1/500 - 1/1000), IHC (1/50 - 1/200)
Format	Liquid in 0.42% Potassium phosphate, 0.87% Sodium chloride, pH 7.3, 30% glycerol, and 0.09% (W/V) sodium azide.
Storage	Store at -20 °C.Stable for 12 months from date of receipt

## Protein Information

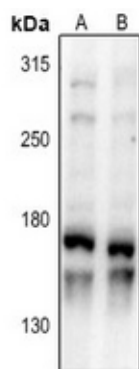
Name	HMGXB3 ( <a href="#">HGNC:28982</a> )
Cellular Location	Nucleus {ECO:0000255 PROSITE-ProRule:PRU00267}.

## Background

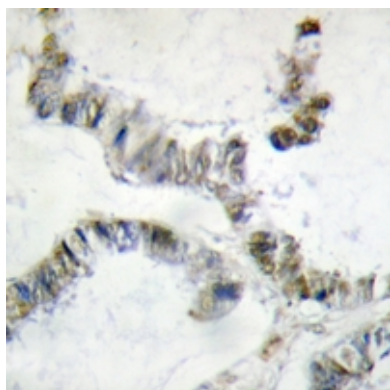
KLH-conjugated synthetic peptide encompassing a sequence within the N-term region of human HMGXB3. The exact sequence is proprietary.

## Images

Western blot analysis of HMGXB3 expression in A549 (A),



MCF7 (B) whole cell lysates.



Immunohistochemical analysis of HMGXB3 staining in human colon cancer formalin fixed paraffin embedded tissue section. The section was pre-treated using heat mediated antigen retrieval with sodium citrate buffer (pH 6.0). The section was then incubated with the antibody at room temperature and detected using an HRP conjugated compact polymer system. DAB was used as the chromogen. The section was then counterstained with haematoxylin and mounted with DPX.

Please note: All products are 'FOR RESEARCH USE ONLY. NOT FOR USE IN DIAGNOSTIC OR THERAPEUTIC PROCEDURES'.