

# Anti-PLA2G4D Antibody

Rabbit polyclonal antibody to PLA2G4D

Catalog # AP61389

## Product Information

Application	WB, IHC
Primary Accession	<a href="#">Q86XP0</a>
Reactivity	Human, Monkey
Host	Rabbit
Clonality	Polyclonal
Calculated MW	91952

## Additional Information

Gene ID	283748
Other Names	Cytosolic phospholipase A2 delta; cPLA2-delta; Phospholipase A2 group IVD
Target/Specificity	KLH-conjugated synthetic peptide encompassing a sequence within the center region of human PLA2G4D. The exact sequence is proprietary.
Dilution	WB~~WB (1/500 - 1/1000), IHC (1/50 - 1/200) IHC~~WB (1/500 - 1/1000), IHC (1/50 - 1/200)
Format	Liquid in 0.42% Potassium phosphate, 0.87% Sodium chloride, pH 7.3, 30% glycerol, and 0.09% (W/V) sodium azide.
Storage	Store at -20 °C.Stable for 12 months from date of receipt

## Protein Information

Name	PLA2G4D ( <a href="#">HGNC:30038</a> )
Function	Calcium-dependent phospholipase A2 that selectively hydrolyzes glycerophospholipids in the sn-2 position (PubMed: <a href="#">14709560</a> ). Has a preference for linoleic acid at the sn-2 position (PubMed: <a href="#">14709560</a> ).
Cellular Location	Cytoplasm, cytosol {ECO:0000250 UniProtKB:Q50L43}. Membrane {ECO:0000250 UniProtKB:Q50L43}; Peripheral membrane protein {ECO:0000250 UniProtKB:Q50L43}; Cytoplasmic side {ECO:0000250 UniProtKB:Q50L43}. Note=Translocates to perinuclear membranes that may correspond to endoplasmic reticulum or Golgi in a calcium-dependent fashion. {ECO:0000250 UniProtKB:Q50L43}
Tissue Location	Expressed in stratified squamous epithelia, such as those in skin and cervix, but not in other tissues (PubMed:14709560) Strongly expressed in the upper spinous layer of the psoriatic epidermis, expressed weakly and

discontinuously in atopic dermatitis and mycosis fungoides, and not detected in the epidermis of normal skin (PubMed:14709560).

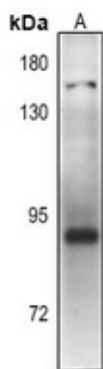
## Background

---

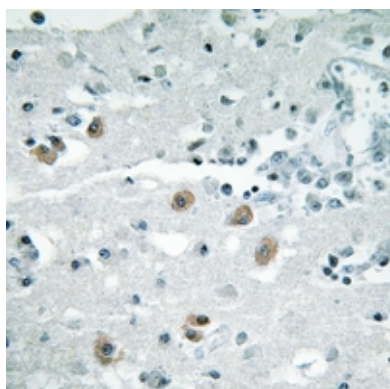
KLH-conjugated synthetic peptide encompassing a sequence within the center region of human PLA2G4D. The exact sequence is proprietary.

## Images

---



Western blot analysis of PLA2G4D expression in HeLa (A) whole cell lysates.



Immunohistochemical analysis of PLA2G4D staining in human brain formalin fixed paraffin embedded tissue section. The section was pre-treated using heat mediated antigen retrieval with sodium citrate buffer (pH 6.0). The section was then incubated with the antibody at room temperature and detected using an HRP conjugated compact polymer system. DAB was used as the chromogen. The section was then counterstained with haematoxylin and mounted with DPX.

Please note: All products are 'FOR RESEARCH USE ONLY. NOT FOR USE IN DIAGNOSTIC OR THERAPEUTIC PROCEDURES'.