

Anti-RALY Antibody

Rabbit polyclonal antibody to RALY
Catalog # AP61390

Product Information

Application	WB
Primary Accession	Q9UKM9
Other Accession	Q64012
Reactivity	Human, Mouse
Host	Rabbit
Clonality	Polyclonal
Calculated MW	32463

Additional Information

Gene ID	22913
Other Names	HNRPCL2; P542; RNA-binding protein Raly; Autoantigen p542; Heterogeneous nuclear ribonucleoprotein C-like 2; hnRNP core protein C-like 2; hnRNP associated with lethal yellow protein homolog
Target/Specificity	Recognizes endogenous levels of RALY protein.
Dilution	WB~~WB (1/500 - 1/1000)
Format	Liquid in 0.42% Potassium phosphate, 0.87% Sodium chloride, pH 7.3, 30% glycerol, and 0.09% (W/V) sodium azide.
Storage	Store at -20 °C.Stable for 12 months from date of receipt

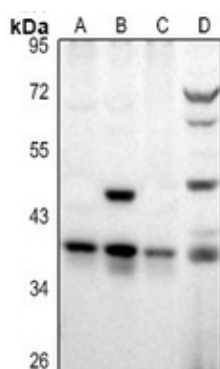
Protein Information

Name	RALY
Synonyms	HNRPCL2, P542
Function	RNA-binding protein that acts as a transcriptional cofactor for cholesterol biosynthetic genes in the liver. Binds the lipid- responsive non-coding RNA LeXis and is required for LeXis-mediated effect on cholesterologenesis (By similarity). May be a heterogeneous nuclear ribonucleoprotein (hnRNP) (PubMed: 9376072).
Cellular Location	Nucleus {ECO:0000250 UniProtKB:Q64012}.
Tissue Location	Expressed in heart, brain, lung, liver, skeletal muscle, kidney and pancreas. Weakly expressed in placenta

Background

KLH-conjugated synthetic peptide encompassing a sequence within the center region of human RALY. The exact sequence is proprietary.

Images



Western blot analysis of RALY expression in Panc1 (A), A549 (B), HEK293T (C), BV2 (D) whole cell lysates.

Please note: All products are 'FOR RESEARCH USE ONLY. NOT FOR USE IN DIAGNOSTIC OR THERAPEUTIC PROCEDURES'.