

Anti-OSR2 Antibody

Rabbit polyclonal antibody to OSR2

Catalog # AP61392

Product Information

Application	WB
Primary Accession	Q8N2R0
Other Accession	Q91ZD1
Reactivity	Human, Mouse, Rat, Bovine
Host	Rabbit
Clonality	Polyclonal
Calculated MW	35513

Additional Information

Gene ID	116039
Other Names	Protein odd-skipped-related 2
Target/Specificity	Recognizes endogenous levels of OSR2 protein.
Dilution	WB~~WB (1/500 - 1/1000)
Format	Liquid in 0.42% Potassium phosphate, 0.87% Sodium chloride, pH 7.3, 30% glycerol, and 0.09% (W/V) sodium azide.
Storage	Store at -20 °C.Stable for 12 months from date of receipt

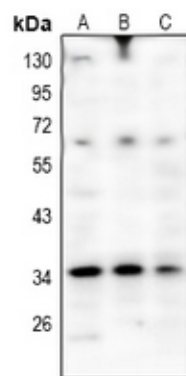
Protein Information

Name	OSR2 (HGNC:15830)
Function	May be involved in the development of the mandibular molar tooth germ at the bud stage.
Cellular Location	Nucleus.

Background

KLH-conjugated synthetic peptide encompassing a sequence within the center region of human OSR2. The exact sequence is proprietary.

Images



Western blot analysis of OSR2 expression in Panc1 (A), SGC7901 (B), H9C2 (C) whole cell lysates.

Please note: All products are 'FOR RESEARCH USE ONLY. NOT FOR USE IN DIAGNOSTIC OR THERAPEUTIC PROCEDURES'.