

# Anti-Mindin Antibody

Rabbit polyclonal antibody to Mindin  
Catalog # AP61393

## Product Information

---

Application	WB
Primary Accession	<a href="#">Q9BUD6</a>
Other Accession	<a href="#">Q8BMS2</a>
Reactivity	Human, Mouse, Rat
Host	Rabbit
Clonality	Polyclonal
Calculated MW	35788

## Additional Information

---

Gene ID	10417
Other Names	DIL1; Spondin-2; Differentially expressed in cancerous and non-cancerous lung cells 1; DIL-1; Mindin
Target/Specificity	Recognizes endogenous levels of Mindin protein.
Dilution	WB~~WB (1/500 - 1/1000)
Format	Liquid in 0.42% Potassium phosphate, 0.87% Sodium chloride, pH 7.3, 30% glycerol, and 0.09% (W/V) sodium azide.
Storage	Store at -20 °C.Stable for 12 months from date of receipt

## Protein Information

---

Name	SPON2
Synonyms	DIL1
Function	Cell adhesion protein that promotes adhesion and outgrowth of hippocampal embryonic neurons. Binds directly to bacteria and their components and functions as an opsonin for macrophage phagocytosis of bacteria. Essential in the initiation of the innate immune response and represents a unique pattern-recognition molecule in the ECM for microbial pathogens (By similarity). Binds bacterial lipopolysaccharide (LPS).
Cellular Location	Secreted, extracellular space, extracellular matrix
Tissue Location	Expressed in normal lung tissue but not in lung carcinoma cell lines.

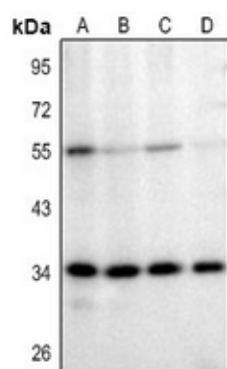
## Background

---

KLH-conjugated synthetic peptide encompassing a sequence within the center region of human Mindin. The exact sequence is proprietary.

## Images

---



Western blot analysis of Mindin expression in PC12 (A), LOVO (B), SGC7901 (C), HEK293T (D) whole cell lysates.

Please note: All products are 'FOR RESEARCH USE ONLY. NOT FOR USE IN DIAGNOSTIC OR THERAPEUTIC PROCEDURES'.