

# Anti-CD218a Antibody

Rabbit polyclonal antibody to CD218a

Catalog # AP61395

## Product Information

|                   |                        |
|-------------------|------------------------|
| Application       | WB                     |
| Primary Accession | <a href="#">Q13478</a> |
| Reactivity        | Human                  |
| Host              | Rabbit                 |
| Clonality         | Polyclonal             |
| Calculated MW     | 62304                  |

## Additional Information

|                    |   |
|--------------------|---|
| Gene ID            | 8809  |
| Other Names        | IL1RRP; Interleukin-18 receptor 1; IL-18R-1; IL-18R1; CD218 antigen-like family member A; CDw218a; IL1 receptor-related protein; IL-1Rrp; IL1R-rp; CD218a |
| Target/Specificity | KLH-conjugated synthetic peptide encompassing a sequence within the center region of human CD218a. The exact sequence is proprietary.                     |
| Dilution           | WB~~WB (1/500 - 1/1000)   |
| Format             | Liquid in 0.42% Potassium phosphate, 0.87% Sodium chloride, pH 7.3, 30% glycerol, and 0.09% (W/V) sodium azide.   |
| Storage            | Store at -20 °C.Stable for 12 months from date of receipt   |

## Protein Information

|                   |  |
|-------------------|--|
| Name              | IL18R1 ( <a href="#">HGNC:5988</a> )   |
| Synonyms          | IL1RRP   |
| Function          | Within the IL18 receptor complex, responsible for the binding of the pro-inflammatory cytokine IL18, but not IL1A nor IL1B (PubMed: <a href="#">14528293</a> , PubMed: <a href="#">25261253</a> , PubMed: <a href="#">25500532</a> , PubMed: <a href="#">37993714</a> , PubMed: <a href="#">8626725</a> ). Involved in IL18-mediated IFNG synthesis from T-helper 1 (Th1) cells (PubMed: <a href="#">10653850</a> ). Contributes to IL18-induced cytokine production, either independently of SLC12A3, or as a complex with SLC12A3 (By similarity). |
| Cellular Location | Membrane; Single- pass type I membrane protein   |
| Tissue Location   | Highly expressed in leukocytes, spleen, lung. Also expressed, but at lower levels, in liver, small intestine, colon, prostate, thymus, placenta, and heart.  |

Specifically coexpressed with IL18R1 in Th1 cells (PubMed:10653850, PubMed:10925275, PubMed:11046021).

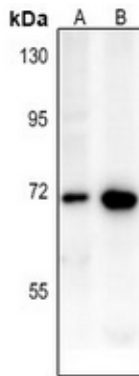
## Background

---

KLH-conjugated synthetic peptide encompassing a sequence within the center region of human CD218a. The exact sequence is proprietary.

## Images

---



Western blot analysis of CD218a expression in A549 (A), LOVO (B) whole cell lysates.

Please note: All products are 'FOR RESEARCH USE ONLY. NOT FOR USE IN DIAGNOSTIC OR THERAPEUTIC PROCEDURES'.