

Anti-Thioredoxin 2 Antibody

Rabbit polyclonal antibody to Thioredoxin 2
Catalog # AP61407

Product Information

| | |
|-------------------|---------------------------|
| Application | WB |
| Primary Accession | Q99757 |
| Other Accession | P97493 |
| Reactivity | Human, Mouse, Rat, Bovine |
| Host | Rabbit |
| Clonality | Polyclonal |
| Calculated MW | 18383 |

Additional Information

| | |
|--------------------|---|
| Gene ID | 25828 |
| Other Names | TRX2; Thioredoxin mitochondrial; MTRX; Mt-Trx; Thioredoxin-2 |
| Target/Specificity | Recognizes endogenous levels of Thioredoxin 2 protein. |
| Dilution | WB~~WB (1/500 - 1/1000) |
| Format | Liquid in 0.42% Potassium phosphate, 0.87% Sodium chloride, pH 7.3, 30% glycerol, and 0.09% (W/V) sodium azide. |
| Storage | Store at -20 °C.Stable for 12 months from date of receipt |

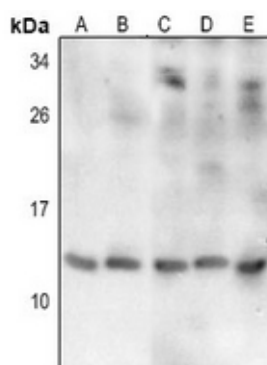
Protein Information

| | |
|-------------------|--|
| Name | TXN2 |
| Synonyms | TRX2 |
| Function | Important for the control of mitochondrial reactive oxygen species homeostasis, apoptosis regulation and cell viability (PubMed: 12032145 , PubMed: 12080052 , PubMed: 26626369) Is involved in various redox reactions including the reduction of protein disulfide bonds, through the reversible oxidation of its active center dithiol to a disulfide (By similarity). |
| Cellular Location | Mitochondrion |
| Tissue Location | Widely expressed in adult (at protein level) and fetal tissues. |

Background

KLH-conjugated synthetic peptide encompassing a sequence within the C-term region of human Thioredoxin 2. The exact sequence is proprietary.

Images



Western blot analysis of Thioredoxin 2 expression in HEK293T (A), Hela (B), mouse liver (C), rat lung (D), rat liver (E) whole cell lysates.

Please note: All products are 'FOR RESEARCH USE ONLY. NOT FOR USE IN DIAGNOSTIC OR THERAPEUTIC PROCEDURES'.