

Anti-Mimecan Antibody

Rabbit polyclonal antibody to Mimecan
Catalog # AP61442

Product Information

Application	WB
Primary Accession	P20774
Reactivity	Human, Bovine
Host	Rabbit
Clonality	Polyclonal
Calculated MW	33922

Additional Information

Gene ID	4969
Other Names	OIF; SLRR3A; Mimecan; Osteoglycin; Osteoinductive factor; OIF
Target/Specificity	KLH-conjugated synthetic peptide encompassing a sequence within the C-term region of human Mimecan. The exact sequence is proprietary.
Dilution	WB~~WB (1/500 - 1/1000)
Format	Liquid in 0.42% Potassium phosphate, 0.87% Sodium chloride, pH 7.3, 30% glycerol, and 0.09% (W/V) sodium azide.
Storage	Store at -20 °C.Stable for 12 months from date of receipt

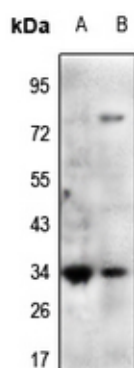
Protein Information

Name	OGN
Synonyms	OIF, SLRR3A
Function	Induces bone formation in conjunction with TGF-beta-1 or TGF- beta-2.
Cellular Location	Secreted, extracellular space, extracellular matrix {ECO:0000250 UniProtKB:Q8MJF1}
Tissue Location	Bone.

Background

KLH-conjugated synthetic peptide encompassing a sequence within the C-term region of human Mimecan. The exact sequence is proprietary.

Images



Western blot analysis of Mimecan expression in SKOVCA3 (A), PC3 (B) whole cell lysates.

Please note: All products are 'FOR RESEARCH USE ONLY. NOT FOR USE IN DIAGNOSTIC OR THERAPEUTIC PROCEDURES'.