

Anti-STAT2 Antibody

Rabbit polyclonal antibody to STAT2

Catalog # AP61443

Product Information

Application	WB
Primary Accession	P52630
Other Accession	Q9WVL2
Reactivity	Human, Mouse, Rat, Pig
Host	Rabbit
Clonality	Polyclonal
Calculated MW	97916

Additional Information

Gene ID	6773
Other Names	Signal transducer and activator of transcription 2; p113
Target/Specificity	Recognizes endogenous levels of STAT2 protein.
Dilution	WB~~WB (1/500 - 1/1000)
Format	Liquid in 0.42% Potassium phosphate, 0.87% Sodium chloride, pH 7.3, 30% glycerol, and 0.09% (W/V) sodium azide.
Storage	Store at -20 °C.Stable for 12 months from date of receipt

Protein Information

Name	STAT2
Function	Signal transducer and activator of transcription that mediates signaling by type I interferons (IFN-alpha and IFN-beta). Following type I IFN binding to cell surface receptors, Jak kinases (TYK2 and JAK1) are activated, leading to tyrosine phosphorylation of STAT1 and STAT2. The phosphorylated STATs dimerize, associate with IRF9/ISGF3G to form a complex termed ISGF3 transcription factor, that enters the nucleus. ISGF3 binds to the IFN stimulated response element (ISRE) to activate the transcription of interferon stimulated genes, which drive the cell in an antiviral state (PubMed: 23391734 , PubMed: 9020188). In addition, also has a negative feedback regulatory role in the type I interferon signaling by recruiting USP18 to the type I IFN receptor subunit IFNAR2 thereby mitigating the response to type I IFNs (PubMed: 28165510). Acts as a regulator of mitochondrial fission by modulating the phosphorylation of DNM1L at 'Ser-616' and 'Ser-637' which activate and inactivate the GTPase activity of DNM1L respectively (PubMed: 23391734 , PubMed: 26122121 , PubMed: 9020188).

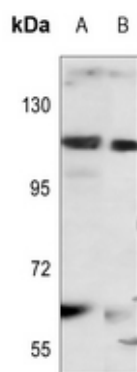
Cellular Location

Cytoplasm. Nucleus Note=Translocated into the nucleus upon activation by IFN-alpha/beta

Background

KLH-conjugated synthetic peptide encompassing a sequence within the N-term region of human STAT2. The exact sequence is proprietary.

Images



Western blot analysis of STAT2 expression in mouse muscle (A), rat muscle (B) whole cell lysates.

Please note: All products are 'FOR RESEARCH USE ONLY. NOT FOR USE IN DIAGNOSTIC OR THERAPEUTIC PROCEDURES'.