

Anti-Topoisomerase 2 alpha (pS1213) Antibody

Rabbit polyclonal antibody to Topoisomerase 2 alpha (pS1213)

Catalog # AP61450

Product Information

Application	WB
Primary Accession	P11388
Reactivity	Human
Host	Rabbit
Clonality	Polyclonal
Calculated MW	174385

Additional Information

Gene ID	7153
Other Names	TOP2; DNA topoisomerase 2-alpha; DNA topoisomerase II alpha isozyme
Target/Specificity	Recognizes endogenous levels of Topoisomerase 2 alpha with a site at pS1213 protein.
Dilution	WB~~WB (1/500 - 1/1000)
Format	Liquid in 0.42% Potassium phosphate, 0.87% Sodium chloride, pH 7.3, 30% glycerol, and 0.09% (W/V) sodium azide.
Storage	Store at -20 °C.Stable for 12 months from date of receipt

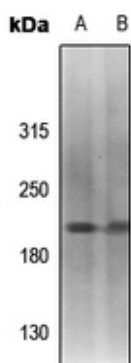
Protein Information

Name	TOP2A
Synonyms	TOP2
Function	Key decatenating enzyme that alters DNA topology by binding to two double-stranded DNA molecules, generating a double-stranded break in one of the strands, passing the intact strand through the broken strand, and religating the broken strand (PubMed: 17567603 , PubMed: 18790802 , PubMed: 22013166 , PubMed: 22323612). May play a role in regulating the period length of BMAL1 transcriptional oscillation (By similarity).
Cellular Location	Cytoplasm. Nucleus, nucleoplasm. Nucleus. Nucleus, nucleolus
Tissue Location	Expressed in the tonsil, spleen, lymph node, thymus, skin, pancreas, testis, colon, kidney, liver, brain and lung (PubMed:9155056). Also found in high-grade lymphomas, squamous cell lung tumors and seminomas (PubMed:9155056)

Background

KLH-conjugated synthetic peptide encompassing a sequence within the C-term region of human Topoisomerase 2 alpha with a site at pS1213. The exact sequence is proprietary.

Images



Western blot analysis of Topoisomerase 2 alpha (pS1213) expression in SHSY5Y (A), Myla2059 (B) whole cell lysates.

Please note: All products are 'FOR RESEARCH USE ONLY. NOT FOR USE IN DIAGNOSTIC OR THERAPEUTIC PROCEDURES'.