

# Anti-14-3-3 sigma (pS186) Antibody

Rabbit polyclonal antibody to 14-3-3 sigma (pS186)

Catalog # AP61454

## Product Information

Application	WB
Primary Accession	<a href="#">P31947</a>
Other Accession	<a href="#">O70456</a>
Reactivity	Human, Mouse, Rat, Pig, Bovine, SARS
Host	Rabbit
Clonality	Polyclonal
Calculated MW	27774

## Additional Information

Gene ID	2810
Other Names	HME1; 14-3-3 protein sigma; Epithelial cell marker protein 1; Stratifin
Target/Specificity	KLH-conjugated synthetic peptide encompassing a sequence within the center region of human 14-3-3 sigma with a site at pS186. The exact sequence is proprietary.
Dilution	WB~~WB (1/500 - 1/1000)
Format	Liquid in 0.42% Potassium phosphate, 0.87% Sodium chloride, pH 7.3, 30% glycerol, and 0.09% (W/V) sodium azide.
Storage	Store at -20 °C.Stable for 12 months from date of receipt

## Protein Information

Name	SFN
Synonyms	HME1 {ECO:0000303 PubMed:1390337}
Function	Adapter protein implicated in the regulation of a large spectrum of both general and specialized signaling pathways (PubMed: <a href="#">15731107</a> , PubMed: <a href="#">22634725</a> , PubMed: <a href="#">28202711</a> , PubMed: <a href="#">37797010</a> ). Binds to a large number of partners, usually by recognition of a phosphoserine or phosphothreonine motif (PubMed: <a href="#">15731107</a> , PubMed: <a href="#">22634725</a> , PubMed: <a href="#">28202711</a> , PubMed: <a href="#">37797010</a> ). Binding generally results in the modulation of the activity of the binding partner (PubMed: <a href="#">15731107</a> , PubMed: <a href="#">22634725</a> , PubMed: <a href="#">28202711</a> , PubMed: <a href="#">37797010</a> ). Promotes cytosolic retention of GBP1 GTPase by binding to phosphorylated GBP1, thereby inhibiting the innate immune response (PubMed: <a href="#">37797010</a> ). Also acts as a TP53/p53-regulated inhibitor of G2/M progression (PubMed: <a href="#">9659898</a> ).

When bound to KRT17, regulates protein synthesis and epithelial cell growth by stimulating Akt/mTOR pathway (By similarity). Acts to maintain desmosome cell junction adhesion in epithelial cells via interacting with and sequestering PKP3 to the cytoplasm, thereby restricting its translocation to existing desmosome structures and therefore maintaining desmosome protein homeostasis (PubMed:[24124604](#)). Also acts to facilitate PKP3 exchange at desmosome plaques, thereby maintaining keratinocyte intercellular adhesion (PubMed:[29678907](#)). May also regulate MDM2 autoubiquitination and degradation and thereby activate p53/TP53 (PubMed:[18382127](#)).

#### Cellular Location

Cytoplasm. Nucleus {ECO:0000250|UniProtKB:O70456} Secreted. Note=May be secreted by a non- classical secretory pathway.

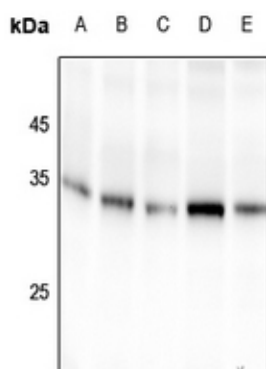
#### Tissue Location

Present mainly in tissues enriched in stratified squamous keratinizing epithelium.

## Background

KLH-conjugated synthetic peptide encompassing a sequence within the center region of human 14-3-3 sigma with a site at pS186. The exact sequence is proprietary.

## Images



Western blot analysis of 14-3-3 sigma (pS186) expression in COS7 (A), MEF (B), SHSY5Y (C), HCT116 (D), A549 (E) whole cell lysates.

Please note: All products are 'FOR RESEARCH USE ONLY. NOT FOR USE IN DIAGNOSTIC OR THERAPEUTIC PROCEDURES'.