

# Anti-DARPP32 Antibody

Rabbit polyclonal antibody to DARPP32

Catalog # AP61455

## Product Information

---

<b>Application</b>	WB, IHC
<b>Primary Accession</b>	<a href="#">Q9UD71</a>
<b>Other Accession</b>	<a href="#">Q60829</a>
<b>Reactivity</b>	Human, Mouse, Rat, Pig
<b>Host</b>	Rabbit
<b>Clonality</b>	Polyclonal
<b>Calculated MW</b>	22963

## Additional Information

---

<b>Gene ID</b>	84152
<b>Other Names</b>	DARPP32; Protein phosphatase 1 regulatory subunit 1B; DARPP-32; Dopamine- and cAMP-regulated neuronal phosphoprotein
<b>Target/Specificity</b>	KLH-conjugated synthetic peptide encompassing a sequence within the center region of human DARPP32. The exact sequence is proprietary.
<b>Dilution</b>	WB~~WB (1/500 - 1/1000), IH (1/50 - 1/200) IHC~~1:100~500
<b>Format</b>	Liquid in 0.42% Potassium phosphate, 0.87% Sodium chloride, pH 7.3, 30% glycerol, and 0.09% (W/V) sodium azide.
<b>Storage</b>	Store at -20 °C.Stable for 12 months from date of receipt

## Protein Information

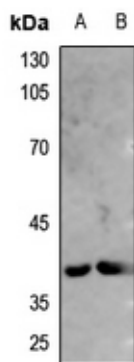
---

<b>Name</b>	PPP1R1B
<b>Synonyms</b>	DARPP32
<b>Function</b>	Inhibitor of protein-phosphatase 1.
<b>Cellular Location</b>	Cytoplasm.

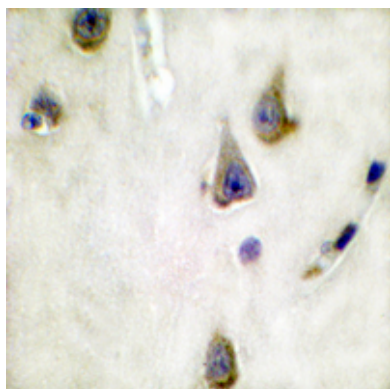
## Background

---

KLH-conjugated synthetic peptide encompassing a sequence within the center region of human DARPP32. The exact sequence is proprietary.



Western blot analysis of DARPP32 expression in mouse heart (A), rat heart (B) whole cell lysates.



Immunohistochemical analysis of DARPP32 staining in human brain formalin fixed paraffin embedded tissue section. The section was pre-treated using heat mediated antigen retrieval with sodium citrate buffer (pH 6.0). The section was then incubated with the antibody at room temperature and detected using an HRP conjugated compact polymer system. DAB was used as the chromogen. The section was then counterstained with haematoxylin and mounted with DPX.

Please note: All products are 'FOR RESEARCH USE ONLY. NOT FOR USE IN DIAGNOSTIC OR THERAPEUTIC PROCEDURES'.