

Anti-FYN Antibody

Rabbit polyclonal antibody to FYN
Catalog # AP61456

Product Information

Application	WB
Primary Accession	P06241
Other Accession	P39688
Reactivity	Human, Mouse, Rat, Zebrafish, Pig, Bovine
Host	Rabbit
Clonality	Polyclonal
Calculated MW	60762

Additional Information

Gene ID	2534
Other Names	Tyrosine-protein kinase Fyn; Proto-oncogene Syn; Proto-oncogene c-Fyn; Src-like kinase; SLK; p59-Fyn
Target/Specificity	KLH-conjugated synthetic peptide encompassing a sequence within the C-term region of human FYN. The exact sequence is proprietary.
Dilution	WB~WB (1/500 - 1/1000)
Format	Liquid in 0.42% Potassium phosphate, 0.87% Sodium chloride, pH 7.3, 30% glycerol, and 0.09% (W/V) sodium azide.
Storage	Store at -20 °C. Stable for 12 months from date of receipt

Protein Information

Name	FYN
Function	Non-receptor tyrosine-protein kinase that plays a role in many biological processes including regulation of cell growth and survival, cell adhesion, integrin-mediated signaling, cytoskeletal remodeling, cell motility, immune response and axon guidance (PubMed: 11536198 , PubMed: 15489916 , PubMed: 15557120 , PubMed: 16387660 , PubMed: 20100835 , PubMed: 7568038 , PubMed: 7822789). Inactive FYN is phosphorylated on its C-terminal tail within the catalytic domain (PubMed: 15489916). Following activation by PKA, the protein subsequently associates with PTK2/FAK1, allowing PTK2/FAK1 phosphorylation, activation and targeting to focal adhesions (PubMed: 15489916). Involved in the regulation of cell adhesion and motility through phosphorylation of CTNNB1 (beta-catenin) and CTNND1 (delta-catenin) (PubMed: 17194753). Regulates cytoskeletal remodeling by phosphorylating several proteins including the actin regulator WAS and the

microtubule-associated proteins MAP2 and MAPT (PubMed:[14707117](#), PubMed:[15536091](#)). Promotes cell survival by phosphorylating AGAP2/PIKE-A and preventing its apoptotic cleavage (PubMed:[16841086](#)). Participates in signal transduction pathways that regulate the integrity of the glomerular slit diaphragm (an essential part of the glomerular filter of the kidney) by phosphorylating several slit diaphragm components including NPHS1, KIRREL1 and TRPC6 (PubMed:[14761972](#), PubMed:[18258597](#), PubMed:[19179337](#)). Plays a role in neural processes by phosphorylating DPYSL2, a multifunctional adapter protein within the central nervous system, ARHGAP32, a regulator for Rho family GTPases implicated in various neural functions, and SNCA, a small pre-synaptic protein (PubMed:[11162638](#), PubMed:[12788081](#), PubMed:[19652227](#)). Involved in reelin signaling by mediating phosphorylation of DAB1 following reelin (RELN)-binding to its receptor (By similarity). Participates in the downstream signaling pathways that lead to T-cell differentiation and proliferation following T-cell receptor (TCR) stimulation (PubMed:[22080863](#)). Phosphorylates PTK2B/PYK2 in response to T-cell receptor activation (PubMed:[20028775](#)). Also participates in negative feedback regulation of TCR signaling through phosphorylation of PAG1 and PDCD1 (PubMed:[18056706](#), PubMed:[32184441](#)). Phosphorylation of PAG1 promotes interaction between PAG1 and CSK and recruitment of CSK to lipid rafts (PubMed:[18056706](#)). Phosphorylation of PDCD1 leads to the recruitment of PTPN11/SHP-2 that mediates dephosphorylation of key TCR proximal signaling molecules (PubMed:[32184441](#)). CSK maintains LCK and FYN in an inactive form (By similarity). Promotes CD28-induced phosphorylation of VAV1 (PubMed:[11005864](#)). In mast cells, phosphorylates CLNK after activation of immunoglobulin epsilon receptor signaling (By similarity). Can also promote CD244-mediated NK cell activation (PubMed:[15713798](#)).

Cellular Location

Cytoplasm. Nucleus Cell membrane. Perikaryon
{ECO:0000250|UniProtKB:Q62844} Note=Present and active in lipid rafts (PubMed:12218089) Palmitoylation is crucial for proper trafficking (PubMed:8206991)

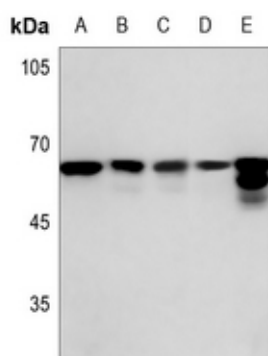
Tissue Location

Isoform 1 is highly expressed in the brain. Isoform 2 is expressed in cells of hemopoietic lineages, especially T- lymphocytes.

Background

KLH-conjugated synthetic peptide encompassing a sequence within the C-term region of human FYN. The exact sequence is proprietary.

Images



Western blot analysis of FYN expression in A549 (A), U2OS (B), H1688 (C), mouse liver (D), rat lung (E) whole cell lysates.

Please note: All products are 'FOR RESEARCH USE ONLY. NOT FOR USE IN DIAGNOSTIC OR THERAPEUTIC PROCEDURES'.