

# Anti-KCHIP1 Antibody

Rabbit polyclonal antibody to KCHIP1

Catalog # AP61465

## Product Information

Application	WB, IHC, IF
Primary Accession	<a href="#">Q9NIZ2</a>
Other Accession	<a href="#">Q9JJ57</a>
Reactivity	Human, Mouse, Rat, Pig, Bovine
Host	Rabbit
Clonality	Polyclonal
Calculated MW	26817

## Additional Information

Gene ID	30820
Other Names	KCHIP1; VABP; Kv channel-interacting protein 1; KChIP1; A-type potassium channel modulatory protein 1; Potassium channel-interacting protein 1; Vesicle APC-binding protein
Target/Specificity	Recognizes endogenous levels of KCHIP1 protein.
Dilution	WB~~WB (1/500 - 1/1000), IH (1/50 - 1/200), IF/IC (1/50 - 1/200) IHC~~1:100~500 IF~~WB (1/500 - 1/1000), IH (1/50 - 1/200), IF/IC (1/50 - 1/200)
Format	Liquid in 0.42% Potassium phosphate, 0.87% Sodium chloride, pH 7.3, 30% glycerol, and 0.09% (W/V) sodium azide.
Storage	Store at -20 °C.Stable for 12 months from date of receipt

## Protein Information

Name	KCNIP1 ( <a href="#">HGNC:15521</a> )
Function	<p>Regulatory subunit of Kv4/D (Shal)-type voltage-gated rapidly inactivating A-type potassium channels (PubMed:<a href="#">10676964</a>, PubMed:<a href="#">11423117</a>, PubMed:<a href="#">17187064</a>, PubMed:<a href="#">34552243</a>, PubMed:<a href="#">34997220</a>). Regulates channel density, inactivation kinetics and rate of recovery from inactivation in a calcium-dependent and isoform-specific manner (PubMed:<a href="#">10676964</a>, PubMed:<a href="#">11423117</a>, PubMed:<a href="#">17187064</a>, PubMed:<a href="#">34552243</a>, PubMed:<a href="#">34997220</a>). In vitro, modulates KCND1/Kv4.1 and KCND2/Kv4.2 currents (PubMed:<a href="#">34552243</a>). Increases the presence of KCND2 at the cell surface (PubMed:<a href="#">12829703</a>).</p> <p>Cell membrane; Peripheral membrane protein. Cytoplasm. Cell projection,</p>

**Cellular Location**

dendrite {ECO:0000250|UniProtKB:Q8R426}

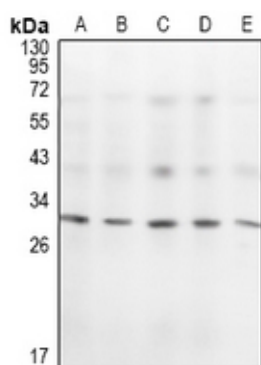
**Tissue Location**

Isoform 1 and isoform 2 are expressed in brain and kidney. Isoform 1 is also expressed in liver, pancreas, skeletal muscle, small intestine and testis. Isoform 2 is also expressed in lung, pancreas, leukocytes, prostate and thymus

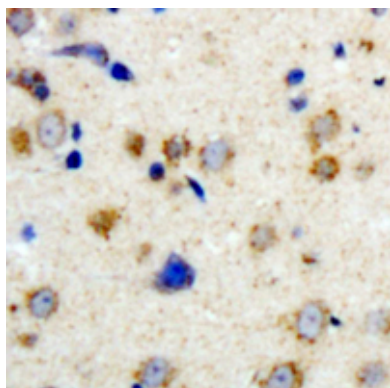
## Background

KLH-conjugated synthetic peptide encompassing a sequence within the N-term region of human KCHIP1. The exact sequence is proprietary.

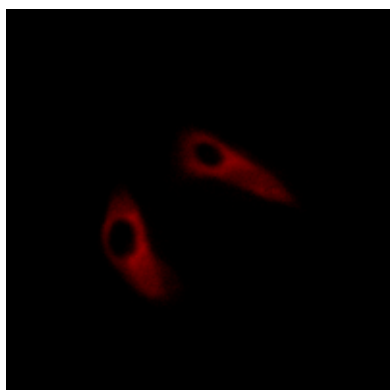
## Images



Western blot analysis of KCHIP1 expression in CT26 (A), C6 (B), MCF7 (C), HEK293T (D), U87MG (E) whole cell lysates.



Immunohistochemical analysis of KCHIP1 staining in human brain formalin fixed paraffin embedded tissue section. The section was pre-treated using heat mediated antigen retrieval with sodium citrate buffer (pH 6.0). The section was then incubated with the antibody at room temperature and detected using an HRP conjugated compact polymer system. DAB was used as the chromogen. The section was then counterstained with haematoxylin and mounted with DPX.



Immunofluorescent analysis of KCHIP1 staining in HeLa cells. Formalin-fixed cells were permeabilized with 0.1% Triton X-100 in TBS for 5-10 minutes and blocked with 3% BSA-PBS for 30 minutes at room temperature. Cells were probed with the primary antibody in 3% BSA-PBS and incubated overnight at 4 °C in a humidified chamber. Cells were washed with PBST and incubated with a Alexa Fluor 594-conjugated secondary antibody (red) in PBS at room temperature in the dark.

Please note: All products are 'FOR RESEARCH USE ONLY. NOT FOR USE IN DIAGNOSTIC OR THERAPEUTIC PROCEDURES'.