

# Anti-PXMP4 Antibody

Rabbit polyclonal antibody to PXMP4

Catalog # AP61470

## Product Information

---

<b>Application</b>	WB, IHC
<b>Primary Accession</b>	<a href="#">Q9Y6I8</a>
<b>Other Accession</b>	<a href="#">Q9JW0</a>
<b>Reactivity</b>	Human, Mouse, Rat
<b>Host</b>	Rabbit
<b>Clonality</b>	Polyclonal
<b>Calculated MW</b>	24264

## Additional Information

---

<b>Gene ID</b>	11264
<b>Other Names</b>	PMP24; Peroxisomal membrane protein 4; 24 kDa peroxisomal intrinsic membrane protein
<b>Target/Specificity</b>	KLH-conjugated synthetic peptide encompassing a sequence within the N-term region of human PXMP4. The exact sequence is proprietary.
<b>Dilution</b>	WB~~WB (1/500 - 1/1000), IH (1/50 - 1/200) IHC~~1:100~500
<b>Format</b>	Liquid in 0.42% Potassium phosphate, 0.87% Sodium chloride, pH 7.3, 30% glycerol, and 0.09% (W/V) sodium azide.
<b>Storage</b>	Store at -20 °C.Stable for 12 months from date of receipt

## Protein Information

---

<b>Name</b>	PXMP4
<b>Synonyms</b>	PMP24
<b>Cellular Location</b>	Peroxisome membrane; Multi-pass membrane protein
<b>Tissue Location</b>	Expressed in normal prostate epithelial cells, and androgen-sensitive prostate adenocarcinoma cells. Not expressed in androgen-insensitive prostate adenocarcinoma cells

## Background

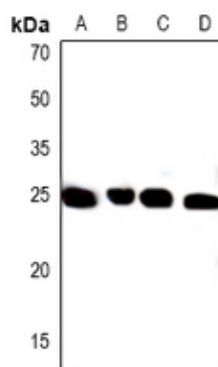
---

KLH-conjugated synthetic peptide encompassing a sequence within the N-term region of human PXMP4. The

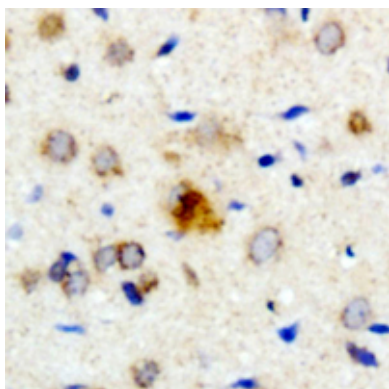
exact sequence is proprietary.

## Images

---



Western blot analysis of PXMP4 expression in mouse lung (A), mouse kidney (B), rat lung (C), rat kidney (D) whole cell lysates.



Immunohistochemical analysis of PXMP4 staining in human brain formalin fixed paraffin embedded tissue section. The section was pre-treated using heat mediated antigen retrieval with sodium citrate buffer (pH 6.0). The section was then incubated with the antibody at room temperature and detected using an HRP conjugated compact polymer system. DAB was used as the chromogen. The section was then counterstained with haematoxylin and mounted with DPX.

Please note: All products are 'FOR RESEARCH USE ONLY. NOT FOR USE IN DIAGNOSTIC OR THERAPEUTIC PROCEDURES'.