

# Anti-Collagen 4 alpha 2 Antibody

Rabbit polyclonal antibody to Collagen 4 alpha 2

Catalog # AP61475

## Product Information

---

Application	WB
Primary Accession	<a href="#">P08572</a>
Other Accession	<a href="#">P08122</a>
Reactivity	Human, Mouse
Host	Rabbit
Clonality	Polyclonal
Calculated MW	167553

## Additional Information

---

Gene ID	1284
Other Names	Collagen alpha-2(IV) chain
Target/Specificity	Recognizes endogenous levels of Collagen 4 alpha 2 protein.
Dilution	WB~~WB (1/500 - 1/1000)
Format	Liquid in 0.42% Potassium phosphate, 0.87% Sodium chloride, pH 7.3, 30% glycerol, and 0.09% (W/V) sodium azide.
Storage	Store at -20 °C.Stable for 12 months from date of receipt

## Protein Information

---

Name	COL4A2 ( <a href="#">HGNC:2203</a> )
Function	Type IV collagen is the major structural component of glomerular basement membranes (GBM), forming a 'chicken-wire' meshwork together with laminins, proteoglycans and entactin/nidogen.
Cellular Location	Secreted, extracellular space, extracellular matrix, basement membrane

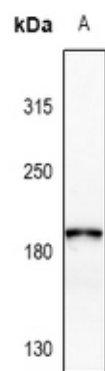
## Background

---

KLH-conjugated synthetic peptide encompassing a sequence within the C-term region of human Collagen 4 alpha 2. The exact sequence is proprietary.

## Images

---



Western blot analysis of Collagen 4 alpha 2 expression in mouse pancreas (A) whole cell lysates.

Please note: All products are 'FOR RESEARCH USE ONLY. NOT FOR USE IN DIAGNOSTIC OR THERAPEUTIC PROCEDURES'.