

Anti-GPR146 Antibody

Rabbit polyclonal antibody to GPR146

Catalog # AP61477

Product Information

Application	WB, IF
Primary Accession	Q96CH1
Reactivity	Human, Rat
Host	Rabbit
Clonality	Polyclonal
Calculated MW	36580

Additional Information

Gene ID	115330
Other Names	PGR8; Probable G-protein coupled receptor 146; G-protein coupled receptor PGR8
Target/Specificity	KLH-conjugated synthetic peptide encompassing a sequence within the center region of human GPR146. The exact sequence is proprietary.
Dilution	WB~~WB (1/500 - 1/1000), IF/IC (1/50 - 1/200) IF~~WB (1/500 - 1/1000), IF/IC (1/50 - 1/200)
Format	Liquid in 0.42% Potassium phosphate, 0.87% Sodium chloride, pH 7.3, 30% glycerol, and 0.09% (W/V) sodium azide.
Storage	Store at -20 °C.Stable for 12 months from date of receipt

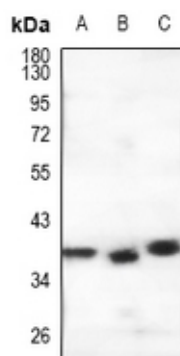
Protein Information

Name	GPR146
Synonyms	PGR8
Function	G-protein coupled receptor required for the regulation of plasma cholesterol levels (PubMed: 31778654 , PubMed: 38503280). Receptor for CHLSN, a gut derived hormone which mediates an inhibitory effect of intestinal cholesterol absorption on hepatic cholesterol synthesis. Cholesin-binding exerts an antagonistic effect by inhibiting PKA signaling and suppressing SREBF2-controlled cholesterol in the liver (PubMed: 38503280).
Cellular Location	Cell membrane; Multi-pass membrane protein

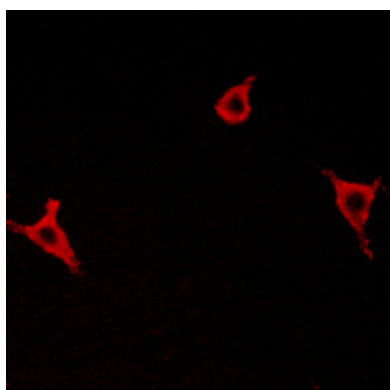
Background

KLH-conjugated synthetic peptide encompassing a sequence within the center region of human GPR146. The exact sequence is proprietary.

Images



Western blot analysis of GPR146 expression in A549 (A), HeLa (B), rat lung (C) whole cell lysates.



Immunofluorescent analysis of GPR146 staining in LOVO cells. Formalin-fixed cells were permeabilized with 0.1% Triton X-100 in TBS for 5-10 minutes and blocked with 3% BSA-PBS for 30 minutes at room temperature. Cells were probed with the primary antibody in 3% BSA-PBS and incubated overnight at 4 °C in a humidified chamber. Cells were washed with PBST and incubated with a Alexa Fluor 594-conjugated secondary antibody (red) in PBS at room temperature in the dark.

Please note: All products are 'FOR RESEARCH USE ONLY. NOT FOR USE IN DIAGNOSTIC OR THERAPEUTIC PROCEDURES'.