

Anti-CD49e Antibody

Rabbit polyclonal antibody to CD49e

Catalog # AP61483

Product Information

Application	WB
Primary Accession	P08648
Other Accession	P11688
Reactivity	Human, Mouse
Host	Rabbit
Clonality	Polyclonal
Calculated MW	114536

Additional Information

Gene ID	3678
Other Names	FNRA; Integrin alpha-5; CD49 antigen-like family member E; Fibronectin receptor subunit alpha; Integrin alpha-F; VLA-5; CD49e
Target/Specificity	KLH-conjugated synthetic peptide encompassing a sequence within the center region of human CD49e. The exact sequence is proprietary.
Dilution	WB~~WB (1/500 - 1/1000)
Format	Liquid in 0.42% Potassium phosphate, 0.87% Sodium chloride, pH 7.3, 30% glycerol, and 0.09% (W/V) sodium azide.
Storage	Store at -20 °C.Stable for 12 months from date of receipt

Protein Information

Name	ITGA5 (HGNC:6141)
Synonyms	FNRA
Function	Integrin alpha-5/beta-1 (ITGA5:ITGB1) is a receptor for fibronectin and fibrinogen. It recognizes the sequence R-G-D in its ligands. ITGA5:ITGB1 binds to PLA2G2A via a site (site 2) which is distinct from the classical ligand-binding site (site 1) and this induces integrin conformational changes and enhanced ligand binding to site 1 (PubMed: 18635536 , PubMed: 25398877). ITGA5:ITGB1 acts as a receptor for fibrillin-1 (FBN1) and mediates R-G-D-dependent cell adhesion to FBN1 (PubMed: 12807887 , PubMed: 17158881). ITGA5:ITGB1 acts as a receptor for fibronectin (FN1) and mediates R-G-D-dependent cell adhesion to FN1 (PubMed: 33962943). ITGA5:ITGB1 is a receptor for IL1B and binding is essential for IL1B signaling (PubMed: 29030430). ITGA5:ITGB1 is a receptor for soluble CD40LG and is required for CD40/CD40LG signaling

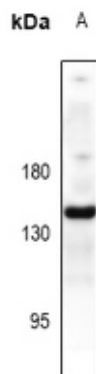
(PubMed:[31331973](#)).

Cellular Location	Cell membrane; Single-pass type I membrane protein. Cell junction, focal adhesion
Tissue Location	Expressed in placenta (at protein level).

Background

KLH-conjugated synthetic peptide encompassing a sequence within the center region of human CD49e. The exact sequence is proprietary.

Images



Western blot analysis of CD49e expression in HeLa (A) whole cell lysates.

Please note: All products are 'FOR RESEARCH USE ONLY. NOT FOR USE IN DIAGNOSTIC OR THERAPEUTIC PROCEDURES'.