

# Anti-Cyclophilin D Antibody

Rabbit polyclonal antibody to Cyclophilin D  
Catalog # AP61486

## Product Information

Application	WB
Primary Accession	<a href="#">Q08752</a>
Other Accession	<a href="#">Q9CR16</a>
Reactivity	Human, Mouse, Rat
Host	Rabbit
Clonality	Polyclonal
Calculated MW	40764

## Additional Information

Gene ID	5481
Other Names	CYP40; CYPD; Peptidyl-prolyl cis-trans isomerase D; PPIase D; 40 kDa peptidyl-prolyl cis-trans isomerase; Cyclophilin-40; CYP-40; Cyclophilin-related protein; Rotamase D
Target/Specificity	KLH-conjugated synthetic peptide encompassing a sequence within the C-term region of human Cyclophilin D. The exact sequence is proprietary.
Dilution	WB~~WB (1/500 - 1/1000)
Format	Liquid in 0.42% Potassium phosphate, 0.87% Sodium chloride, pH 7.3, 30% glycerol, and 0.09% (W/V) sodium azide.
Storage	Store at -20 °C.Stable for 12 months from date of receipt

## Protein Information

Name	PPID ( <a href="#">HGNC:9257</a> )
Synonyms	CYP40, CYPD
Function	PPIase that catalyzes the cis-trans isomerization of proline imidic peptide bonds in oligopeptides and may therefore assist protein folding (PubMed: <a href="#">11350175</a> , PubMed: <a href="#">20676357</a> ). Proposed to act as a co- chaperone in HSP90 complexes such as in unligated steroid receptors heterocomplexes. Different co-chaperones seem to compete for association with HSP90 thus establishing distinct HSP90-co-chaperone- receptor complexes with the potential to exert tissue-specific receptor activity control. May have a preference for estrogen receptor complexes and is not found in glucocorticoid receptor complexes. May be involved in cytoplasmic dynein-dependent movement of the receptor from the cytoplasm to the

nucleus. May regulate MYB by inhibiting its DNA- binding activity. Involved in regulation of AHR signaling by promoting the formation of the AHR:ARNT dimer; the function is independent of HSP90 but requires the chaperone activity. Involved in regulation of UV radiation-induced apoptosis. Promotes cell viability in anaplastic lymphoma kinase-positive anaplastic large-cell lymphoma (ALK+ ALCL) cell lines.

**Cellular Location** Cytoplasm. Nucleus, nucleolus. Nucleus, nucleoplasm

**Tissue Location** Widely expressed.

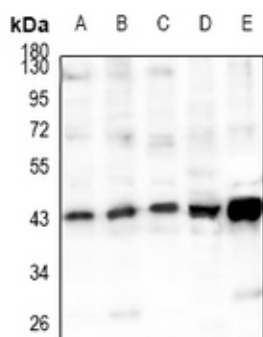
## Background

---

KLH-conjugated synthetic peptide encompassing a sequence within the C-term region of human Cyclophilin D. The exact sequence is proprietary.

## Images

---



Western blot analysis of Cyclophilin D expression in MCF7 (A), HEK293T (B), U87MG (C), rat kidney (D), mouse brain (E) whole cell lysates.

Please note: All products are 'FOR RESEARCH USE ONLY. NOT FOR USE IN DIAGNOSTIC OR THERAPEUTIC PROCEDURES'.