

# Anti-Fetuin A Antibody

Rabbit polyclonal antibody to Fetuin A  
Catalog # AP61487

## Product Information

---

Application	WB
Primary Accession	<a href="#">P02765</a>
Other Accession	<a href="#">P29699</a>
Reactivity	Human, Mouse, Rat, Bovine, SARS
Host	Rabbit
Clonality	Polyclonal
Calculated MW	39341

## Additional Information

---

Gene ID	197
Other Names	FETUA; Alpha-2-HS-glycoprotein; Alpha-2-Z-globulin; Ba-alpha-2-glycoprotein; Fetuin-A
Target/Specificity	Recognizes endogenous levels of Fetuin A protein.
Dilution	WB~~WB (1/500 - 1/1000)
Format	Liquid in 0.42% Potassium phosphate, 0.87% Sodium chloride, pH 7.3, 30% glycerol, and 0.09% (W/V) sodium azide.
Storage	Store at -20 °C.Stable for 12 months from date of receipt

## Protein Information

---

Name	AHSG
Synonyms	FETUA
Function	Promotes endocytosis, possesses opsonic properties and influences the mineral phase of bone. Shows affinity for calcium and barium ions.
Cellular Location	Secreted.
Tissue Location	Synthesized in liver and selectively concentrated in bone matrix. Secreted in plasma. It is also found in dentin in much higher quantities than other plasma proteins

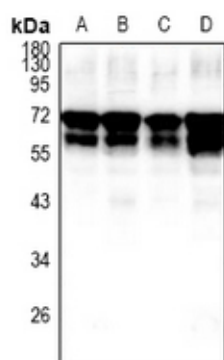
## Background

---

KLH-conjugated synthetic peptide encompassing a sequence within the center region of human Fetuin A. The exact sequence is proprietary.

## Images

---



Western blot analysis of Fetuin A expression in PC12 (A), AML12 (B), HEK293T (C), H1792 (D) whole cell lysates.

Please note: All products are 'FOR RESEARCH USE ONLY. NOT FOR USE IN DIAGNOSTIC OR THERAPEUTIC PROCEDURES'.