

Anti-ILF2 Antibody

Rabbit polyclonal antibody to ILF2

Catalog # AP61488

Product Information

Application	WB
Primary Accession	Q12905
Other Accession	Q9CXY6
Reactivity	Human, Mouse, Rat
Host	Rabbit
Clonality	Polyclonal
Calculated MW	43062

Additional Information

Gene ID	3608
Other Names	NF45; Interleukin enhancer-binding factor 2; Nuclear factor of activated T-cells 45 kDa
Target/Specificity	KLH-conjugated synthetic peptide encompassing a sequence within the C-term region of human ILF2. The exact sequence is proprietary.
Dilution	WB~~WB (1/500 - 1/1000)
Format	Liquid in 0.42% Potassium phosphate, 0.87% Sodium chloride, pH 7.3, 30% glycerol, and 0.09% (W/V) sodium azide.
Storage	Store at -20 °C.Stable for 12 months from date of receipt

Protein Information

Name	ILF2
Synonyms	NF45
Function	Chromatin-interacting protein that forms a stable heterodimer with interleukin enhancer-binding factor 3/ILF3 and plays a role in several biological processes including transcription, innate immunity or cell growth (PubMed: 18458058 , PubMed: 31212927). Essential for the efficient reshuttling of ILF3 (isoform 1 and isoform 2) into the nucleus. Together with ILF3, forms an RNA-binding complex that is required for mitotic progression and cytokinesis by regulating the expression of a cluster of mitotic genes. Mechanistically, competes with STAU1/STAU2-mediated mRNA decay (PubMed: 32433969). Also plays a role in the inhibition of various viruses including Japanese encephalitis virus or enterovirus 71.

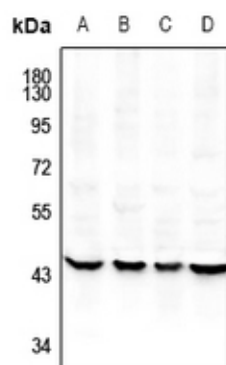
Cellular Location

Nucleus, nucleolus. Cytoplasm. Nucleus. Note=Localized in cytoplasmic mRNP granules containing untranslated mRNAs

Background

KLH-conjugated synthetic peptide encompassing a sequence within the C-term region of human ILF2. The exact sequence is proprietary.

Images



Western blot analysis of ILF2 expression in Raw264.7 (A), Beas2B (B), HCT116 (C), HEK293T (D) whole cell lysates.

Please note: All products are 'FOR RESEARCH USE ONLY. NOT FOR USE IN DIAGNOSTIC OR THERAPEUTIC PROCEDURES'.