

Jagged 2 (JAG2) Antibody (C-term)

Purified Rabbit Polyclonal Antibody (Pab)

Catalog # AP6148A

Product Information

Application	WB, IHC-P, E
Primary Accession	Q9Y219
Other Accession	NP_002217
Reactivity	Human
Host	Rabbit
Clonality	Polyclonal
Isotype	Rabbit IgG
Calculated MW	133367
Antigen Region	1209-1238

Additional Information

Gene ID	3714
Other Names	Protein jagged-2, Jagged2, hj2, JAG2
Target/Specificity	This Jagged 2 (JAG2) antibody is generated from rabbits immunized with a KLH conjugated synthetic peptide between 1209-1238 amino acids from the C-terminal region of human Jagged 2 (JAG2).
Dilution	WB~~1:1000 IHC-P~~1:100~500 E~~Use at an assay dependent concentration.
Format	Purified polyclonal antibody supplied in PBS with 0.09% (W/V) sodium azide. This antibody is prepared by Saturated Ammonium Sulfate (SAS) precipitation followed by dialysis against PBS.
Storage	Maintain refrigerated at 2-8°C for up to 2 weeks. For long term storage store at -20°C in small aliquots to prevent freeze-thaw cycles.
Precautions	Jagged 2 (JAG2) Antibody (C-term) is for research use only and not for use in diagnostic or therapeutic procedures.

Protein Information

Name	JAG2
Function	Putative Notch ligand involved in the mediation of Notch signaling. Involved in limb development (By similarity).
Cellular Location	Membrane; Single-pass type I membrane protein.

Tissue Location

Expressed in heart, placenta and skeletal muscle and to a lesser extent in pancreas. Very low expression in brain, lung, liver and kidney

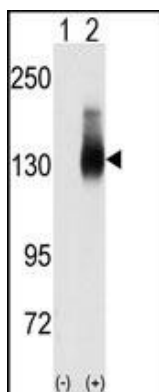
Background

The Notch signaling pathway is an intercellular signaling mechanism that is essential for proper embryonic development. Members of the Notch gene family encode transmembrane receptors that are critical for various cell fate decisions. JAG2 is one of several ligands that activate Notch and related receptors.

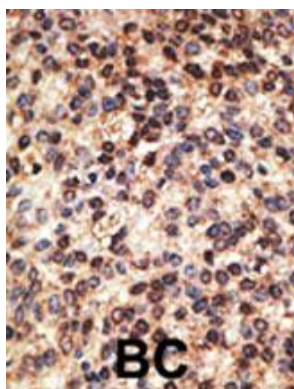
References

Hayashi, T., et al., J. Androl. 22(6):999-1011 (2001).
Lindner, V., et al., Am. J. Pathol. 159(3):875-883 (2001).
Cereseto, A., et al., J. Cell. Physiol. 185(3):425-431 (2000).
Tsai, S., et al., Blood 96(3):950-957 (2000).
Deng, Y., et al., Genomics 63(1):133-138 (2000).

Images



Western blot analysis of Jag2 (arrow) using JAG2 Antibody (C-term) (Cat.#AP6148a). 293 cell lysates (2 ug/lane) either nontransfected (Lane 1) or transiently transfected with the JAG2 gene (Lane 2) (Origene Technologies).



Formalin-fixed and paraffin-embedded human cancer tissue reacted with the primary antibody, which was peroxidase-conjugated to the secondary antibody, followed by DAB staining. This data demonstrates the use of this antibody for immunohistochemistry; clinical relevance has not been evaluated. BC = breast carcinoma; HC = hepatocarcinoma.

Citations

- [Matrix Gla protein regulates differentiation of endothelial cells derived from mouse embryonic stem cells.](#)

Please note: All products are 'FOR RESEARCH USE ONLY. NOT FOR USE IN DIAGNOSTIC OR THERAPEUTIC PROCEDURES'.