

# Anti-PDGFB Antibody

Rabbit polyclonal antibody to PDGFB

Catalog # AP61507

## Product Information

---

|                   |                        |
|-------------------|------------------------|
| Application       | WB                     |
| Primary Accession | <a href="#">P01127</a> |
| Other Accession   | <a href="#">P31240</a> |
| Reactivity        | Human, Mouse, Rat      |
| Host              | Rabbit                 |
| Clonality         | Polyclonal             |
| Calculated MW     | 27283                  |

## Additional Information

---

|                    |  |
|--------------------|--|
| Gene ID            | 5155   |
| Other Names        | PDGF2; SIS; Platelet-derived growth factor subunit B; PDGF subunit B; PDGF-2; Platelet-derived growth factor B chain; Platelet-derived growth factor beta polypeptide; Proto-oncogene c-Sis; Becaplermin |
| Target/Specificity | KLH-conjugated synthetic peptide encompassing a sequence within the center region of human PDGFB. The exact sequence is proprietary.   |
| Dilution           | WB~~WB (1/500 - 1/1000)  |
| Format             | Liquid in 0.42% Potassium phosphate, 0.87% Sodium chloride, pH 7.3, 30% glycerol, and 0.09% (W/V) sodium azide.  |
| Storage            | Store at -20 °C.Stable for 12 months from date of receipt  |

## Protein Information

---

|          |  |
|----------|--|
| Name     | PDGFB  |
| Synonyms | PDGF2, SIS   |
| Function | Growth factor that plays an essential role in the regulation of embryonic development, cell proliferation, cell migration, survival and chemotaxis. Potent mitogen for cells of mesenchymal origin (PubMed: <a href="#">26599395</a> ). Required for normal proliferation and recruitment of pericytes and vascular smooth muscle cells in the central nervous system, skin, lung, heart and placenta. Required for normal blood vessel development, and for normal development of kidney glomeruli. Plays an important role in wound healing. Signaling is modulated by the formation of heterodimers with PDGFA (By similarity). |

**Cellular Location**

Secreted. Note=Released by platelets upon wounding

**Tissue Location**

Expressed at high levels in the heart, brain (substantia nigra), placenta and fetal kidney. Expressed at moderate levels in the brain (hippocampus), skeletal muscle, kidney and lung

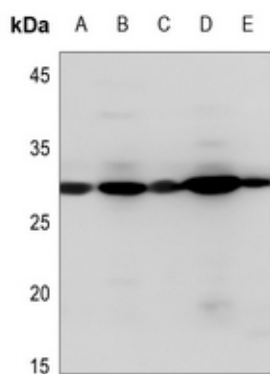
**Background**

---

KLH-conjugated synthetic peptide encompassing a sequence within the center region of human PDGFB. The exact sequence is proprietary.

**Images**

---



Western blot analysis of PDGFB expression in U2OS (A), mouse liver (B), mouse muscle (C), rat liver (D), rat muscle (E) whole cell lysates.

Please note: All products are 'FOR RESEARCH USE ONLY. NOT FOR USE IN DIAGNOSTIC OR THERAPEUTIC PROCEDURES'.