

Anti-mPR alpha Antibody

Rabbit polyclonal antibody to mPR alpha

Catalog # AP61509

Product Information

Application	WB, IF/IC, IHC
Primary Accession	Q86WK9
Other Accession	Q80ZE4
Reactivity	Human, Mouse, Rat
Host	Rabbit
Clonality	Polyclonal
Calculated MW	39719

Additional Information

Gene ID	164091
Other Names	MRPA; Membrane progesterin receptor alpha; mPR alpha; Progesterin and adipoQ receptor family member 7; Progesterin and adipoQ receptor family member VII
Target/Specificity	KLH-conjugated synthetic peptide encompassing a sequence within the C-term region of human mPR alpha. The exact sequence is proprietary.
Dilution	WB~~WB (1/500 - 1/1000), IHC (1/100 - 1/200), IF/IC (1/100 - 1/500) IF/IC~~N/A IHC~~WB (1/500 - 1/1000), IHC (1/100 - 1/200), IF/IC (1/100 - 1/500)
Format	Liquid in 0.42% Potassium phosphate, 0.87% Sodium chloride, pH 7.3, 30% glycerol, and 0.09% (W/V) sodium azide.
Storage	Store at -20 °C.Stable for 12 months from date of receipt

Protein Information

Name	PAQR7 (HGNC:23146)
Synonyms	MRPA
Function	Plasma membrane progesterone (P4) receptor coupled to G proteins (PubMed: 23763432). Seems to act through a G(i) mediated pathway (PubMed: 23763432). May be involved in oocyte maturation (PubMed: 12601167). Involved in neurosteroid inhibition of apoptosis (PubMed: 23161870). Also binds dehydroepiandrosterone (DHEA), pregnanolone, pregnenolone and allopregnanolone (PubMed: 23161870).
Cellular Location	Cell membrane; Multi-pass membrane protein

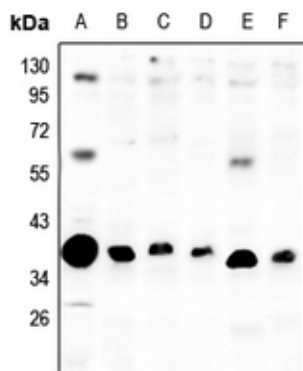
Tissue Location

Expressed in a wide range of tissues including ovary, testis, placenta, uterus and bladder

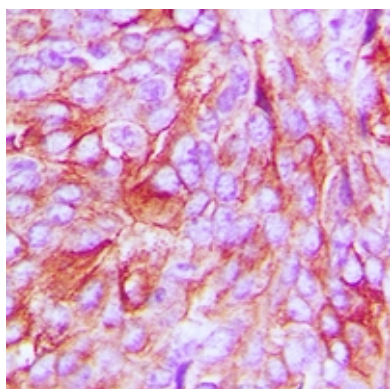
Background

KLH-conjugated synthetic peptide encompassing a sequence within the C-term region of human mPR alpha. The exact sequence is proprietary.

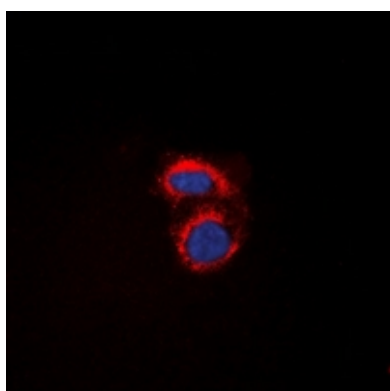
Images



Western blot analysis of mPR alpha expression in HeLa (A), SGC7901 (B), HCT116 (C), U87MG (D), C6 (E), CT26 (F) whole cell lysates.



Immunohistochemical analysis of mPR alpha staining in human breast cancer formalin fixed paraffin embedded tissue section. The section was pre-treated using heat mediated antigen retrieval with sodium citrate buffer (pH 6.0). The section was then incubated with the antibody at room temperature and detected using an HRP conjugated compact polymer system. DAB was used as the chromogen. The section was then counterstained with haematoxylin and mounted with DPX.



Immunofluorescent analysis of mPR alpha staining in A549 cells. Formalin-fixed cells were permeabilized with 0.1% Triton X-100 in TBS for 5-10 minutes and blocked with 3% BSA-PBS for 30 minutes at room temperature. Cells were probed with the primary antibody in 3% BSA-PBS and incubated overnight at 4 °C in a humidified chamber. Cells were washed with PBST and incubated with a DyLight 594-conjugated secondary antibody (red) in PBS at room temperature in the dark. DAPI was used to stain the cell nuclei (blue).

Please note: All products are 'FOR RESEARCH USE ONLY. NOT FOR USE IN DIAGNOSTIC OR THERAPEUTIC PROCEDURES'.