

Anti-MYPT1 Antibody

Rabbit polyclonal antibody to MYPT1

Catalog # AP61515

Product Information

Application	WB, IHC
Primary Accession	O14974
Other Accession	Q9DBR7
Reactivity	Human, Mouse, Rat, Zebrafish, Chicken
Host	Rabbit
Clonality	Polyclonal
Calculated MW	115281

Additional Information

Gene ID	4659
Other Names	MBS; MYPT1; Protein phosphatase 1 regulatory subunit 12A; Myosin phosphatase-targeting subunit 1; Myosin phosphatase target subunit 1; Protein phosphatase myosin-binding subunit
Target/Specificity	Recognizes endogenous levels of MYPT1 protein.
Dilution	WB~~WB (1/500 - 1/1000), IHC (1/100 - 1/200) IHC~~WB (1/500 - 1/1000), IHC (1/100 - 1/200)
Format	Liquid in 0.42% Potassium phosphate, 0.87% Sodium chloride, pH 7.3, 30% glycerol, and 0.09% (W/V) sodium azide.
Storage	Store at -20 °C.Stable for 12 months from date of receipt

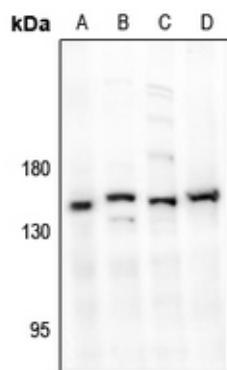
Protein Information

Name	PPP1R12A (HGNC:7618)
Function	Key regulator of protein phosphatase 1C (PPP1C). Mediates binding to myosin. As part of the PPP1C complex, involved in dephosphorylation of PLK1. Capable of inhibiting HIF1AN-dependent suppression of HIF1A activity.
Cellular Location	Cytoplasm. Cytoplasm, cytoskeleton, stress fiber. Note=Also along actomyosin filaments
Tissue Location	Expressed in striated muscles, specifically in type 2a fibers (at protein level).

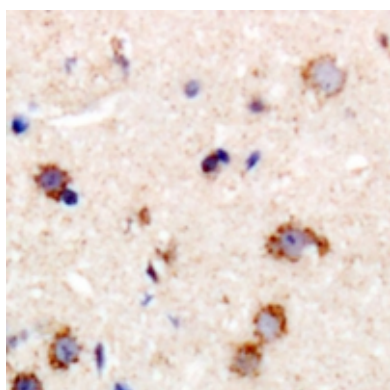
Background

KLH-conjugated synthetic peptide encompassing a sequence within the center region of human MYPT1. The exact sequence is proprietary.

Images



Western blot analysis of MYPT1 expression in HEK293T (A), A2780 (B), C6 (C), SP20 (D) whole cell lysates.



Immunohistochemical analysis of MYPT1 staining in human brain formalin fixed paraffin embedded tissue section. The section was pre-treated using heat mediated antigen retrieval with sodium citrate buffer (pH 6.0). The section was then incubated with the antibody at room temperature and detected using an HRP conjugated compact polymer system. DAB was used as the chromogen. The section was then counterstained with haematoxylin and mounted with DPX.

Please note: All products are 'FOR RESEARCH USE ONLY. NOT FOR USE IN DIAGNOSTIC OR THERAPEUTIC PROCEDURES'.