

Anti-CALB1 Antibody

Rabbit polyclonal antibody to CALB1
Catalog # AP61526

Product Information

Application	WB
Primary Accession	P05937
Reactivity	Human, Rat, Pig, Bovine
Host	Rabbit
Clonality	Polyclonal
Calculated MW	30025

Additional Information

Gene ID	793
Other Names	CAB27; Calbindin; Calbindin D28; D-28K; Vitamin D-dependent calcium-binding protein, avian-type
Target/Specificity	KLH-conjugated synthetic peptide encompassing a sequence within the C-term region of human CALB1. The exact sequence is proprietary.
Dilution	WB~~WB (1/500 - 1/1000)
Format	Liquid in 0.42% Potassium phosphate, 0.87% Sodium chloride, pH 7.3, 30% glycerol, and 0.09% (W/V) sodium azide.
Storage	Store at -20 °C. Stable for 12 months from date of receipt

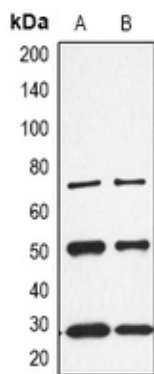
Protein Information

Name	CALB1
Synonyms	CAB27
Function	Buffers cytosolic calcium. May stimulate a membrane Ca(2+)-ATPase and a 3',5'-cyclic nucleotide phosphodiesterase.

Background

KLH-conjugated synthetic peptide encompassing a sequence within the C-term region of human CALB1. The exact sequence is proprietary.

Images



Western blot analysis of CALB1 expression in K562 (A), rat kidney (B) whole cell lysates.

Please note: All products are 'FOR RESEARCH USE ONLY. NOT FOR USE IN DIAGNOSTIC OR THERAPEUTIC PROCEDURES'.