

# Anti-CD112 Antibody

Rabbit polyclonal antibody to CD112  
Catalog # AP61527

## Product Information

---

<b>Application</b>	WB
<b>Primary Accession</b>	<a href="#">Q92692</a>
<b>Other Accession</b>	<a href="#">P32507</a>
<b>Reactivity</b>	Human, Mouse, Rat
<b>Host</b>	Rabbit
<b>Clonality</b>	Polyclonal

## Additional Information

---

<b>Other Names</b>	HVEB; PRR2; Poliovirus receptor-related protein 2; Herpes virus entry mediator B; Herpesvirus entry mediator B; HveB; Nectin-2; CD112
<b>Target/Specificity</b>	KLH-conjugated synthetic peptide encompassing a sequence within the center region of human CD112. The exact sequence is proprietary.
<b>Dilution</b>	WB~~WB (1/500 - 1/1000)
<b>Format</b>	Liquid in 0.42% Potassium phosphate, 0.87% Sodium chloride, pH 7.3, 30% glycerol, and 0.09% (W/V) sodium azide.
<b>Storage</b>	Store at -20 °C. Stable for 12 months from date of receipt

## Protein Information

---

### Background

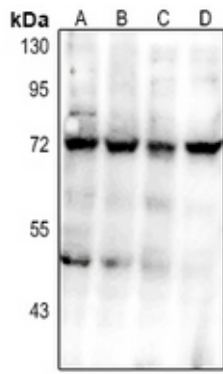
---

KLH-conjugated synthetic peptide encompassing a sequence within the center region of human CD112. The exact sequence is proprietary.

### Images

---

Western blot analysis of CD112 expression in AML12 (A), H9C2 (B), A549 (C), Panc1 (D) whole cell lysates.



Please note: All products are 'FOR RESEARCH USE ONLY. NOT FOR USE IN DIAGNOSTIC OR THERAPEUTIC PROCEDURES'.