

Anti-Beclin-1 Antibody

Rabbit polyclonal antibody to Beclin-1
Catalog # AP61539

Product Information

Application	WB
Primary Accession	Q14457
Other Accession	O88597
Reactivity	Human, Mouse
Host	Rabbit
Clonality	Polyclonal
Calculated MW	51896

Additional Information

Gene ID	8678
Other Names	GT197; Beclin-1; Coiled-coil myosin-like BCL2-interacting protein; Protein GT197
Target/Specificity	Recognizes endogenous levels of Beclin-1 protein.
Dilution	WB~~WB (1/500 - 1/2000)
Format	Liquid in 0.42% Potassium phosphate, 0.87% Sodium chloride, pH 7.3, 30% glycerol, and 0.09% (W/V) sodium azide.
Storage	Store at -20 °C.Stable for 12 months from date of receipt

Protein Information

Name	BECN1
Synonyms	GT197
Function	Plays a central role in autophagy (PubMed: 18570871 , PubMed: 21358617 , PubMed: 23184933 , PubMed: 23974797 , PubMed: 25484083 , PubMed: 28445460 , PubMed: 37776275). Acts as a core subunit of the PI3K complex that mediates formation of phosphatidylinositol 3-phosphate; different complex forms are believed to play a role in multiple membrane trafficking pathways: PI3KC3-C1 is involved in initiation of autophagosomes and PI3KC3-C2 in maturation of autophagosomes and endocytosis. Involved in regulation of degradative endocytic trafficking and required for the abscission step in cytokinesis, probably in the context of PI3KC3-C2 (PubMed: 20208530 , PubMed: 20643123 , PubMed: 23974797 , PubMed: 26783301). Essential for the formation of PI3KC3-C2 but not PI3KC3-C1 PI3K complex forms. Involved in endocytosis (PubMed: 25275521).

May play a role in antiviral host defense.

Cellular Location

Cytoplasm. Golgi apparatus, trans-Golgi network membrane; Peripheral membrane protein. Endosome membrane; Peripheral membrane protein. Endoplasmic reticulum membrane; Peripheral membrane protein. Mitochondrion membrane; Peripheral membrane protein. Endosome {ECO:0000250|UniProtKB:O88597} Cytoplasmic vesicle, autophagosome. Note=Interaction with ATG14 promotes translocation to autophagosomes. Expressed in dendrites and cell bodies of cerebellar Purkinje cells (By similarity) {ECO:0000250|UniProtKB:O88597, ECO:0000269|PubMed:19050071} [Beclin-1-C 37 kDa]: Mitochondrion {ECO:0000250|UniProtKB:O88597}

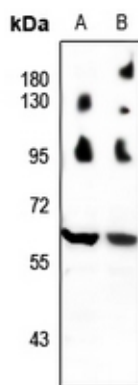
Tissue Location

Ubiquitous.

Background

KLH-conjugated synthetic peptide encompassing a sequence within the center region of human Beclin-1. The exact sequence is proprietary.

Images



Western blot analysis of Beclin-1 expression in Jurkat (A), U87MG (B) whole cell lysates.

Please note: All products are 'FOR RESEARCH USE ONLY. NOT FOR USE IN DIAGNOSTIC OR THERAPEUTIC PROCEDURES'.