

# Anti-LGALS3BP Antibody

Rabbit polyclonal antibody to LGALS3BP

Catalog # AP61541

## Product Information

---

|                          |                        |
|--------------------------|------------------------|
| <b>Application</b>       | WB                     |
| <b>Primary Accession</b> | <a href="#">Q08380</a> |
| <b>Other Accession</b>   | <a href="#">Q07797</a> |
| <b>Reactivity</b>        | Human, Mouse           |
| <b>Host</b>              | Rabbit                 |
| <b>Clonality</b>         | Polyclonal             |
| <b>Calculated MW</b>     | 65331                  |

## Additional Information

---

|                           |   |
|---------------------------|---|
| <b>Gene ID</b>            | 3959  |
| <b>Other Names</b>        | M2BP; Galectin-3-binding protein; Basement membrane autoantigen p105; Lectin galactoside-binding soluble 3-binding protein; Mac-2-binding protein; MAC2BP; Mac-2 BP; Tumor-associated antigen 90K |
| <b>Target/Specificity</b> | KLH-conjugated synthetic peptide encompassing a sequence within the center region of human LGALS3BP. The exact sequence is proprietary.   |
| <b>Dilution</b>           | WB~~WB (1/500 - 1/2000)   |
| <b>Format</b>             | Liquid in 0.42% Potassium phosphate, 0.87% Sodium chloride, pH 7.3, 30% glycerol, and 0.09% (W/V) sodium azide.   |
| <b>Storage</b>            | Store at -20 °C.Stable for 12 months from date of receipt   |

## Protein Information

---

|                          |  |
|--------------------------|--|
| <b>Name</b>              | LGALS3BP   |
| <b>Synonyms</b>          | M2BP   |
| <b>Function</b>          | Promotes integrin-mediated cell adhesion. May stimulate host defense against viruses and tumor cells.                                |
| <b>Cellular Location</b> | Secreted. Secreted, extracellular space, extracellular matrix  |
| <b>Tissue Location</b>   | Ubiquitous. Detected in body fluids such as semen, milk, serum, tears, saliva and urine. Expressed by keratinocytes and fibroblasts. |

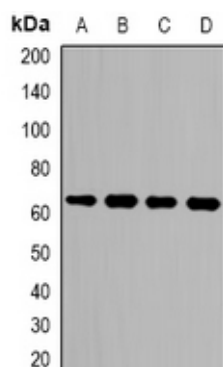
## Background

---

KLH-conjugated synthetic peptide encompassing a sequence within the center region of human LGALS3BP. The exact sequence is proprietary.

## Images

---



Western blot analysis of LGALS3BP expression in mouse lung (A), mouse brain (B), mouse kidney (C), mouse heart (D) whole cell lysates.

Please note: All products are 'FOR RESEARCH USE ONLY. NOT FOR USE IN DIAGNOSTIC OR THERAPEUTIC PROCEDURES'.