

Anti-CD273 Antibody

Rabbit polyclonal antibody to CD273

Catalog # AP61543

Product Information

Application	WB
Primary Accession	Q9BQ51
Reactivity	Human
Host	Rabbit
Clonality	Polyclonal
Calculated MW	30957

Additional Information

Gene ID	80380
Other Names	B7DC; CD273; PDCD1L2; PDL2; Programmed cell death 1 ligand 2; PD-1 ligand 2; PD-L2; PDCD1 ligand 2; Programmed death ligand 2; Butyrophilin B7-DC; B7-DC; CD273
Target/Specificity	KLH-conjugated synthetic peptide encompassing a sequence within the center region of human CD273. The exact sequence is proprietary.
Dilution	WB~~WB (1/500 - 1/2000)
Format	Liquid in 0.42% Potassium phosphate, 0.87% Sodium chloride, pH 7.3, 30% glycerol, and 0.09% (W/V) sodium azide.
Storage	Store at -20 °C.Stable for 12 months from date of receipt

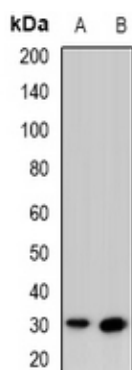
Protein Information

Name	PDCD1LG2
Synonyms	B7DC, CD273, PDCD1L2, PDL2
Function	Involved in the costimulatory signal, essential for T-cell proliferation and IFNG production in a PDCD1-independent manner. Interaction with PDCD1 inhibits T-cell proliferation by blocking cell cycle progression and cytokine production (By similarity).
Cellular Location	[Isoform 3]: Secreted [Isoform 1]: Cell membrane; Single-pass type I membrane protein {ECO:0000250 UniProtKB:Q9WUL5, ECO:0000305 PubMed:15340161}
Tissue Location	Highly expressed in heart, placenta, pancreas, lung and liver and weakly expressed in spleen, lymph nodes and thymus

Background

KLH-conjugated synthetic peptide encompassing a sequence within the center region of human CD273. The exact sequence is proprietary.

Images



Western blot analysis of CD273 expression in HeLa (A), HepG2 (B) whole cell lysates.

Please note: All products are 'FOR RESEARCH USE ONLY. NOT FOR USE IN DIAGNOSTIC OR THERAPEUTIC PROCEDURES'.