

Anti-Collagen 17 alpha 1 Antibody

Rabbit polyclonal antibody to Collagen 17 alpha 1

Catalog # AP61544

Product Information

Application	WB, IHC
Primary Accession	Q9UMD9
Other Accession	Q07563
Reactivity	Human, Mouse, Rat
Host	Rabbit
Clonality	Polyclonal
Calculated MW	150419

Additional Information

Gene ID	1308
Other Names	BP180; BPAG2; Collagen alpha-1(XVII) chain; 180 kDa bullous pemphigoid antigen 2; Bullous pemphigoid antigen 2
Target/Specificity	Recognizes endogenous levels of Collagen 17 alpha 1 protein.
Dilution	WB~~WB (1/500 - 1/2000), IHC (1/50 - 1/200) IHC~~WB (1/500 - 1/2000), IHC (1/50 - 1/200)
Format	Liquid in 0.42% Potassium phosphate, 0.87% Sodium chloride, pH 7.3, 30% glycerol, and 0.09% (W/V) sodium azide.
Storage	Store at -20 °C.Stable for 12 months from date of receipt

Protein Information

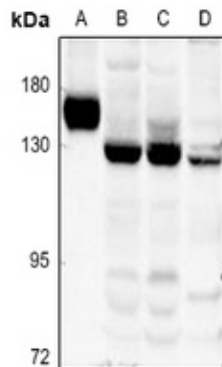
Name	COL17A1
Synonyms	BP180, BPAG2
Function	May play a role in the integrity of hemidesmosome and the attachment of basal keratinocytes to the underlying basement membrane.
Cellular Location	Cell junction, hemidesmosome. Membrane; Single- pass type II membrane protein. Note=Localized along the plasma membrane of the hemidesmosome [97 kDa linear IgA disease antigen]: Secreted, extracellular space, extracellular matrix, basement membrane Note=Localized in the lamina lucida beneath the hemidesmosomes
Tissue Location	Detected in skin (PubMed:8618013). In the cornea, it is detected in the epithelial basement membrane, the epithelial cells, and at a lower level in

stromal cells (at protein level) (PubMed:25676728). Stratified squamous epithelia. Found in hemidesmosomes. Expressed in cornea, oral mucosa, esophagus, intestine, kidney collecting ducts, ureter, bladder, urethra and thymus but is absent in lung, blood vessels, skeletal muscle and nerves

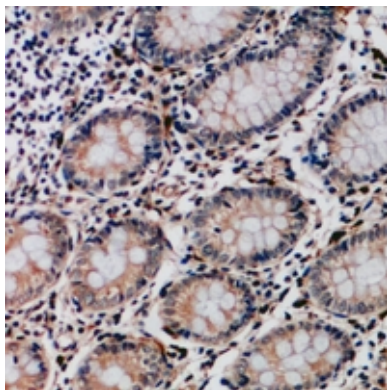
Background

KLH-conjugated synthetic peptide encompassing a sequence within the center region of human Collagen 17 alpha 1. The exact sequence is proprietary.

Images



Western blot analysis of Collagen 17 alpha 1 expression in rat kidney (A), HCT116 (B), HepG2 (C), 3T3L1 (D) whole cell lysates.



Immunohistochemical analysis of Collagen 17 alpha 1 staining in human colon cancer formalin fixed paraffin embedded tissue section. The section was pre-treated using heat mediated antigen retrieval with sodium citrate buffer (pH 6.0). The section was then incubated with the antibody at room temperature and detected using an HRP conjugated compact polymer system. DAB was used as the chromogen. The section was then counterstained with haematoxylin and mounted with DPX.

Please note: All products are 'FOR RESEARCH USE ONLY. NOT FOR USE IN DIAGNOSTIC OR THERAPEUTIC PROCEDURES'.