

Anti-HA-tag Antibody-HRP labeled

Rabbit polyclonal antibody to HA-tag-HRP labeled

Catalog # AP61550

Product Information

Application	WB
Host	Rabbit
Clonality	Polyclonal

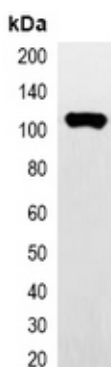
Additional Information

Target/Specificity	Recognizes C-terminal, internal, and N-terminal HA-tag fusion proteins.
Dilution	WB~~WB (1/1000 - 1/3000)
Format	Liquid in 0.42% Potassium phosphate, 0.87% Sodium chloride, pH 7.3, 30% glycerol, and 0.09% (W/V) sodium azide.
Storage	Store at -20 °C.Stable for 12 months from date of receipt

Background

KLH-conjugated synthetic peptide encompassing a sequence of HA-tag-HRP labeled. The exact sequence is proprietary.

Images



Western blot analysis of over-expressed HA-tagged protein in 293T cell lysate.

Please note: All products are 'FOR RESEARCH USE ONLY. NOT FOR USE IN DIAGNOSTIC OR THERAPEUTIC PROCEDURES'.