

# Anti-ABCB5 Antibody

Mouse monoclonal antibody to ABCB5

Catalog # AP61564

## Product Information

Application	WB, IHC
Primary Accession	<a href="#">Q2M3G0</a>
Reactivity	Human
Host	Mouse
Clonality	Monoclonal
Calculated MW	138641

## Additional Information

Gene ID	340273
Other Names	ATP-binding cassette sub-family B member 5; ABCB5 P-gp; P-glycoprotein ABCB5
Target/Specificity	Recognizes endogenous levels of ABCB5 protein.
Dilution	WB~~WB (1/1000 - 1/2000), IHC (1/200 - 1/500) IHC~~WB (1/1000 - 1/2000), IHC (1/200 - 1/500)
Format	Liquid in 0.42% Potassium phosphate, 0.87% Sodium chloride, pH 7.3, 30% glycerol, and 0.09% (W/V) sodium azide.
Storage	Store at -20 °C.Stable for 12 months from date of receipt

## Protein Information

Name	ABCB5 ( <a href="#">HGNC:46</a> )
Function	Energy-dependent efflux transporter responsible for decreased drug accumulation in multidrug-resistant cells (PubMed: <a href="#">12960149</a> , PubMed: <a href="#">15205344</a> , PubMed: <a href="#">15899824</a> , PubMed: <a href="#">22306008</a> ). Specifically present in limbal stem cells, where it plays a key role in corneal development and repair (By similarity).
Cellular Location	Cell membrane; Multi-pass membrane protein {ECO:0000255 PROSITE-ProRule:PRU00441, ECO:0000269 PubMed:12960149}
Tissue Location	Expressed by CD133-expressing progenitor cells among epidermal melanocytes (at protein level). Widely expressed with specific expression in pigment cells. Highly expressed in several malignant tissues: highly expressed in clinical melanomas, with low expression in normal skin. In melanoma,

marks malignant melanoma- initiating cells (MMIC), in which clinical virulence resides as a consequence of unlimited self-renewal capacity, resulting in inexorable tumor progression and metastasis. Also highly expressed in a number of leukemia cells. Expressed in basal limbal epithelium

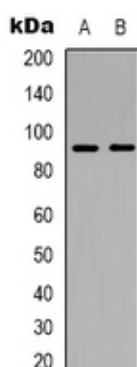
## Background

---

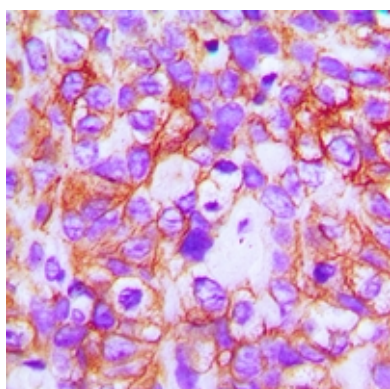
KLH-conjugated synthetic peptide encompassing a sequence of human ABCB5. The exact sequence is proprietary.

## Images

---



Western blot analysis of ABCB5 expression in Hela (A), 293T (B) whole cell lysates.



Immunohistochemical analysis of ABCB5 staining in human breast cancer formalin fixed paraffin embedded tissue section. The section was pre-treated using heat mediated antigen retrieval with sodium citrate buffer (pH 6.0). The section was then incubated with the antibody at room temperature and detected using an HRP conjugated compact polymer system. DAB was used as the chromogen. The section was then counterstained with haematoxylin and mounted with DPX.

Please note: All products are 'FOR RESEARCH USE ONLY. NOT FOR USE IN DIAGNOSTIC OR THERAPEUTIC PROCEDURES'.