

Anti-Alpha-lactalbumin Antibody

Mouse monoclonal antibody to Alpha-lactalbumin
Catalog # AP61567

Product Information

Application	WB
Primary Accession	P00709
Reactivity	Human
Host	Mouse
Clonality	Monoclonal

Additional Information

Other Names	LYZL7; Alpha-lactalbumin; Lactose synthase B protein; Lysozyme-like protein 7
Target/Specificity	KLH-conjugated synthetic peptide encompassing a sequence of human Alpha-lactalbumin. The exact sequence is proprietary.
Dilution	WB~WB (1/1000 - 1/2000)
Format	Liquid in 0.42% Potassium phosphate, 0.87% Sodium chloride, pH 7.3, 30% glycerol, and 0.09% (W/V) sodium azide.
Storage	Store at -20 °C. Stable for 12 months from date of receipt

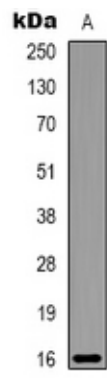
Protein Information

Background

KLH-conjugated synthetic peptide encompassing a sequence of human Alpha-lactalbumin. The exact sequence is proprietary.

Images

Western blot analysis of Alpha-lactalbumin expression in Milk (A) whole cell lysates.



Please note: All products are 'FOR RESEARCH USE ONLY. NOT FOR USE IN DIAGNOSTIC OR THERAPEUTIC PROCEDURES'.