

Anti-Beta-actin Antibody-HRP labled

Rabbit polyclonal antibody to Beta-actin-HRP labled

Catalog # AP61571

Product Information

Application	WB
Primary Accession	P60709
Other Accession	P60710
Reactivity	Human, Mouse, Rat, Rabbit, Monkey, Chicken, Drosophila
Host	Rabbit
Clonality	Polyclonal
Calculated MW	41737

Additional Information

Gene ID	60
Other Names	Actin cytoplasmic 1; Beta-actin
Target/Specificity	KLH-conjugated synthetic peptide encompassing a sequence of human Beta-actin-HRP labled. The exact sequence is proprietary.
Dilution	WB~~WB (1/2000 - 1/5000)
Format	Liquid in 0.42% Potassium phosphate, 0.87% Sodium chloride, pH 7.3, 30% glycerol, and 0.09% (W/V) sodium azide.
Storage	Store at -20 °C.Stable for 12 months from date of receipt

Protein Information

Name	ACTB
Function	<p>Actin is a highly conserved protein that polymerizes to produce filaments that form cross-linked networks in the cytoplasm of cells (PubMed:25255767, PubMed:29581253). Actin exists in both monomeric (G-actin) and polymeric (F-actin) forms, both forms playing key functions, such as cell motility and contraction (PubMed:29581253). In addition to their role in the cytoplasmic cytoskeleton, G- and F- actin also localize in the nucleus, and regulate gene transcription and motility and repair of damaged DNA (PubMed:29925947). Plays a role in the assembly of the gamma-tubulin ring complex (gTuRC), which regulates the minus-end nucleation of alpha-beta tubulin heterodimers that grow into microtubule protofilaments (PubMed:39321809, PubMed:38609661). Part of the ACTR1A/ACTB filament around which the dynactin complex is built (By similarity). The dynactin multiprotein complex activates the molecular motor dynein for ultra-processive transport along microtubules (By similarity).</p>

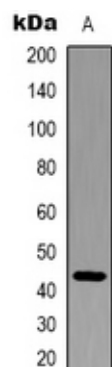
Cellular Location

Cytoplasm, cytoskeleton. Nucleus Note=Localized in cytoplasmic mRNP granules containing untranslated mRNAs.

Background

KLH-conjugated synthetic peptide encompassing a sequence of human Beta-actin-HRP labeled. The exact sequence is proprietary.

Images



Western blot analysis of Beta-actin-HRP labeled expression in Hela (A) whole cell lysates.

Please note: All products are 'FOR RESEARCH USE ONLY. NOT FOR USE IN DIAGNOSTIC OR THERAPEUTIC PROCEDURES'.