

Anti-Beta-tubulin Antibody-HRP labeled

Mouse monoclonal antibody to Beta-tubulin-HRP labeled

Catalog # AP61572

Product Information

Application	WB, IHC
Primary Accession	P07437
Reactivity	Human, Mouse, Rat, Rabbit, Monkey, Chicken, Dog, SARS
Host	Mouse
Clonality	Monoclonal
Calculated MW	49671

Additional Information

Gene ID	203068
Other Names	TUBB5; Tubulin beta chain; Tubulin beta-5 chain
Target/Specificity	Recognizes endogenous levels of Beta-tubulin protein.
Dilution	WB~~WB (1/20000 - 1/600000), IHC (1/1000 - 1/2000) IHC~~WB (1/20000 - 1/600000), IHC (1/1000 - 1/2000)
Format	Liquid in 0.42% Potassium phosphate, 0.87% Sodium chloride, pH 7.3, 30% glycerol, and 0.09% (W/V) sodium azide.
Storage	Store at -20 °C.Stable for 12 months from date of receipt

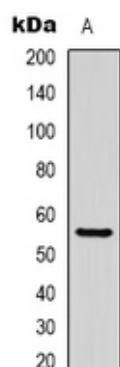
Protein Information

Name	TUBB
Synonyms	TUBB5
Function	Tubulin is the major constituent of microtubules, a cylinder consisting of laterally associated linear protofilaments composed of alpha- and beta-tubulin heterodimers. Microtubules grow by the addition of GTP-tubulin dimers to the microtubule end, where a stabilizing cap forms. Below the cap, tubulin dimers are in GDP-bound state, owing to GTPase activity of alpha-tubulin.
Cellular Location	Cytoplasm, cytoskeleton
Tissue Location	Ubiquitously expressed with highest levels in spleen, thymus and immature brain.

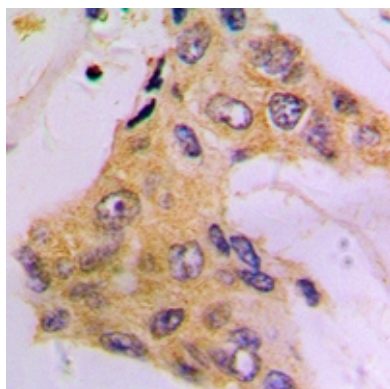
Background

Recombinant protein corresponding to human Beta-tubulin.

Images



Western blot analysis of Beta-tubulin-HRP labeled expression in Hela (A) whole cell lysates.



Immunohistochemical analysis of Beta-tubulin-HRP labeled staining in human breast cancer formalin fixed paraffin embedded tissue section. The section was pre-treated using heat mediated antigen retrieval with sodium citrate buffer (pH 6.0). The section was then incubated with the antibody at room temperature and detected using an HRP conjugated compact polymer system. DAB was used as the chromogen. The section was then counterstained with haematoxylin and mounted with DPX.

Please note: All products are 'FOR RESEARCH USE ONLY. NOT FOR USE IN DIAGNOSTIC OR THERAPEUTIC PROCEDURES'.