

Anti-Cyclophilin B Antibody

Mouse monoclonal antibody to Cyclophilin B

Catalog # AP61577

Product Information

Application	WB, IHC
Primary Accession	P23284
Reactivity	Human, Mouse, Rat
Host	Mouse
Clonality	Monoclonal
Calculated MW	23743

Additional Information

Gene ID	5479
Other Names	CYPB; Peptidyl-prolyl cis-trans isomerase B; PPIase B; CYP-S1; Cyclophilin B; Rotamase B; S-cyclophilin; SCYLP
Target/Specificity	Recognizes endogenous levels of Cyclophilin B protein.
Dilution	WB~~WB (1/1000 - 1/2000), IHC (1/100 - 1/200) IHC~~WB (1/1000 - 1/2000), IHC (1/100 - 1/200)
Format	Liquid in 0.42% Potassium phosphate, 0.87% Sodium chloride, pH 7.3, 30% glycerol, and 0.09% (W/V) sodium azide.
Storage	Store at -20 °C.Stable for 12 months from date of receipt

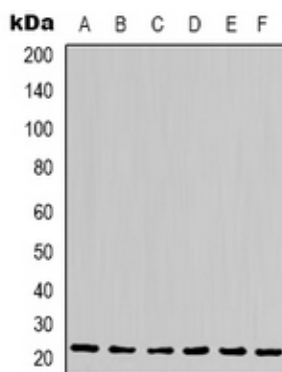
Protein Information

Name	PPIB
Synonyms	CYPB
Function	PPIase that catalyzes the cis-trans isomerization of proline imidic peptide bonds in oligopeptides and may therefore assist protein folding.
Cellular Location	Virion. Note=(Microbial infection)

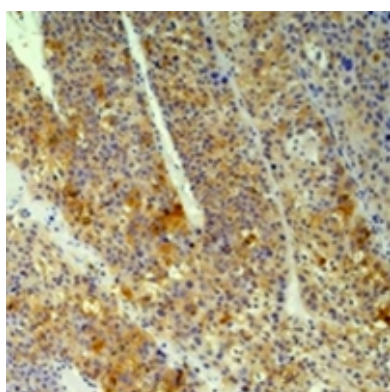
Background

KLH-conjugated synthetic peptide encompassing a sequence of human Cyclophilin B. The exact sequence is proprietary.

Images



Western blot analysis of Cyclophilin B expression in Hela (A), Jurkat (B), 293T (C), HepG2 (D), NIH3T3 (E), rat liver (F) whole cell lysates.



Immunohistochemical analysis of Cyclophilin B staining in human hepatocellular carcinoma, human pancreatic cancer formalin fixed paraffin embedded tissue section. The section was pre-treated using heat mediated antigen retrieval with sodium citrate buffer (pH 6.0). The section was then incubated with the antibody at room temperature and detected using an HRP conjugated compact polymer system. DAB was used as the chromogen. The section was then counterstained with haematoxylin and mounted with DPX.

Please note: All products are 'FOR RESEARCH USE ONLY. NOT FOR USE IN DIAGNOSTIC OR THERAPEUTIC PROCEDURES'.