

Anti-Fumarase Antibody

Mouse monoclonal antibody to Fumarase

Catalog # AP61580

Product Information

| | |
|-------------------|------------------------|
| Application | WB, IF/IC |
| Primary Accession | P07954 |
| Other Accession | P97807 |
| Reactivity | Human, Mouse, Rat |
| Host | Mouse |
| Clonality | Monoclonal |
| Calculated MW | 54637 |

Additional Information

| | |
|--------------------|---|
| Gene ID | 2271 |
| Other Names | Fumarate hydratase mitochondrial; Fumarase |
| Target/Specificity | Recognizes endogenous levels of Fumarase protein. |
| Dilution | WB~~WB (1/1000 - 1/3000), IF/IC (1/100 - 1/200) IF/IC~~N/A |
| Format | Liquid in 0.42% Potassium phosphate, 0.87% Sodium chloride, pH 7.3, 30% glycerol, and 0.09% (W/V) sodium azide. |
| Storage | Store at -20 °C.Stable for 12 months from date of receipt |

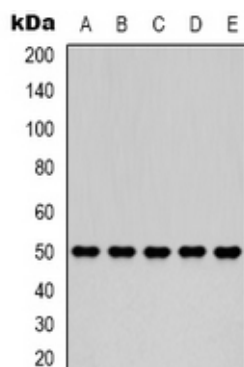
Protein Information

| | |
|-------------------|---|
| Name | FH {ECO:0000303 PubMed:27037871, ECO:0000312 HGNC:HGNC:3700} |
| Function | Catalyzes the reversible stereospecific interconversion of fumarate to L-malate (PubMed: 30761759). Experiments in other species have demonstrated that specific isoforms of this protein act in defined pathways and favor one direction over the other (Probable). |
| Cellular Location | [Isoform Mitochondrial]: Mitochondrion |
| Tissue Location | Expressed in red blood cells; underexpressed in red blood cells (cytoplasm) of patients with hereditary non-spherocytic hemolytic anemia of unknown etiology. |

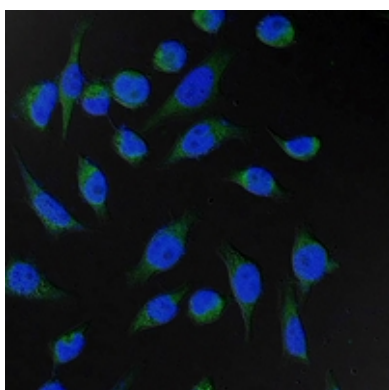
Background

KLH-conjugated synthetic peptide encompassing a sequence of human Fumarase. The exact sequence is proprietary.

Images



Western blot analysis of Fumarase expression in 293T (A), HepG2 (B), Hela (C), mouse brain (D), rat brain (E) whole cell lysates.



Immunofluorescent analysis of Fumarase staining in Hela cells. Formalin-fixed cells were permeabilized with 0.1% Triton X-100 in TBS for 5-10 minutes and blocked with 3% BSA-PBS for 30 minutes at room temperature. Cells were probed with the primary antibody in 3% BSA-PBS and incubated overnight at 4 °C in a humidified chamber. Cells were washed with PBST and incubated with a FITC-conjugated secondary antibody (green) in PBS at room temperature in the dark. DAPI was used to stain the cell nuclei (blue).

Please note: All products are 'FOR RESEARCH USE ONLY. NOT FOR USE IN DIAGNOSTIC OR THERAPEUTIC PROCEDURES'.