

# Anti-Histone H3 (DiMethyl K9) Antibody

Mouse monoclonal antibody to Histone H3 (DiMethyl K9)

Catalog # AP61586

## Product Information

---

<b>Application</b>	WB, IHC
<b>Primary Accession</b>	<a href="#">P68431</a> , <a href="#">Q71DI3</a> , <a href="#">P84243</a>
<b>Other Accession</b>	<a href="#">P68433</a> , <a href="#">P84228</a> , <a href="#">P84244</a>
<b>Reactivity</b>	Human, Mouse, Rat
<b>Host</b>	Mouse
<b>Clonality</b>	Monoclonal
<b>Calculated MW</b>	15404

## Additional Information

---

<b>Gene ID</b>	8350;8351;8352;8353;8354;8355;8356;8357;8358;8968
<b>Other Names</b>	HIST1H3A; H3FA; HIST1H3B; H3FL; HIST1H3C; H3FC; HIST1H3D; H3FB; HIST1H3E; H3FD; HIST1H3F; H3FI; HIST1H3G; H3FH; HIST1H3H; H3FK; HIST1H3I; H3FF; HIST1H3J; H3FJ; Histone H3.1; Histone H3/a; Histone H3/b; Histone H3/c; Histone H3/d; Histone H3/f; Histone H3/h; Histone H3/i; Histone H3/j; Histone H3/k; Histone H3/l; HIST2H3A; HIST2H3C; H3F2; H3FM; HIST2H3D; Histone H3.2; Histone H3/m; Histone H3/o; H3F3A; H3.3A; H3F3; PP781; H3F3B; H3.3B; Histone H3.3
<b>Target/Specificity</b>	KLH-conjugated synthetic peptide encompassing a sequence of human Histone H3. The exact sequence is proprietary.
<b>Dilution</b>	WB~~WB (1/1000 - 1/3000), IHC (1/200 - 1/500) IHC~~WB (1/1000 - 1/3000), IHC (1/200 - 1/500)
<b>Format</b>	Liquid in 0.42% Potassium phosphate, 0.87% Sodium chloride, pH 7.3, 30% glycerol, and 0.09% (W/V) sodium azide.
<b>Storage</b>	Store at -20 °C. Stable for 12 months from date of receipt

## Protein Information

---

<b>Name</b>	H3C1 ( <a href="#">HGNC:4766</a> )
<b>Synonyms</b>	H3FA, HIST1H3A
<b>Function</b>	Core component of nucleosome. Nucleosomes wrap and compact DNA into chromatin, limiting DNA accessibility to the cellular machineries which require DNA as a template. Histones thereby play a central role in transcription regulation, DNA repair, DNA replication and chromosomal stability. DNA accessibility is regulated via a complex set of post-translational modifications

of histones, also called histone code, and nucleosome remodeling.

**Cellular Location**

Nucleus. Chromosome.

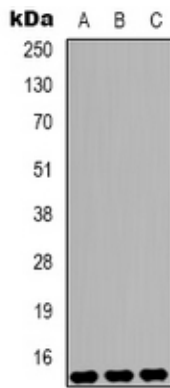
**Background**

---

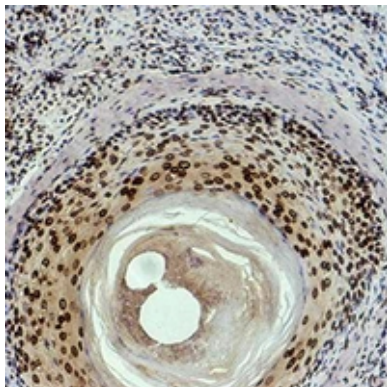
KLH-conjugated synthetic peptide encompassing a sequence of human Histone H3. The exact sequence is proprietary.

**Images**

---



Western blot analysis of Histone H3 (DiMethyl K9) expression in HeLa (A), Raw264.7 (B), rat heart (C) whole cell lysates.



Immunohistochemical analysis of Histone H3 (DiMethyl K9) staining in human skin formalin fixed paraffin embedded tissue section. The section was pre-treated using heat mediated antigen retrieval with sodium citrate buffer (pH 6.0). The section was then incubated with the antibody at room temperature and detected using an HRP conjugated compact polymer system. DAB was used as the chromogen. The section was then counterstained with haematoxylin and mounted with DPX.

Please note: All products are 'FOR RESEARCH USE ONLY. NOT FOR USE IN DIAGNOSTIC OR THERAPEUTIC PROCEDURES'.