

MAGED2 Antibody (C-term)

Purified Rabbit Polyclonal Antibody (Pab)

Catalog # AP6177a

Product Information

Application	WB, IHC-P, E
Primary Accession	Q9UNF1
Reactivity	Human
Host	Rabbit
Clonality	Polyclonal
Isotype	Rabbit IgG
Clone Names	RB2127
Calculated MW	64954
Antigen Region	576-606

Additional Information

Gene ID	10916
Other Names	Melanoma-associated antigen D2, 11B6, Breast cancer-associated gene 1 protein, BCG-1, Hepatocellular carcinoma-associated protein JCL-1, MAGE-D2 antigen, MAGED2, BCG1
Target/Specificity	This MAGED2 antibody is generated from rabbits immunized with a KLH conjugated synthetic peptide between 576-606 amino acids from the C-terminal region of human MAGED2.
Dilution	WB~~1:1000 IHC-P~~1:100~500 E~~Use at an assay dependent concentration.
Format	Purified polyclonal antibody supplied in PBS with 0.09% (W/V) sodium azide. This antibody is prepared by Saturated Ammonium Sulfate (SAS) precipitation followed by dialysis against PBS.
Storage	Maintain refrigerated at 2-8°C for up to 2 weeks. For long term storage store at -20°C in small aliquots to prevent freeze-thaw cycles.
Precautions	MAGED2 Antibody (C-term) is for research use only and not for use in diagnostic or therapeutic procedures.

Protein Information

Name	MAGED2
Synonyms	BCG1
Function	Regulates the expression, localization to the plasma membrane and

function of the sodium chloride cotransporters SLC12A1 and SLC12A3, two key components of salt reabsorption in the distal renal tubule.

Tissue Location

Widely expressed. In the developing and adult kidney, expressed in the thick ascending limb of the loop of Henle and the distal convoluted tubules outside the loop

Background

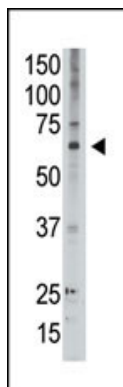
MAGED2 is a member of the MAGED gene family. In contrast to the MAGEA and MAGEB genes, which have their entire coding sequences located in the last exon, the MAGED genes have their coding sequences located throughout multiple exons. Also, the MAGEA and MAGEB genes are silent in normal tissues with the exception of testis and placenta, whereas the MAGED genes are expressed ubiquitously. The MAGED genes are clustered on chromosome Xp11. This gene is located in Xp11.2, a hot spot for X-linked mental retardation (XLMR).

References

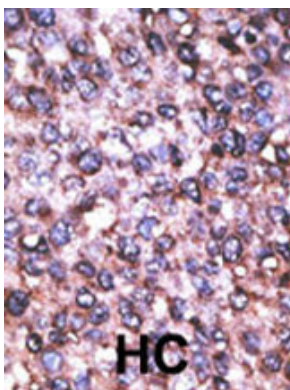
Lucas, S., et al., Cancer Res. 59(16):4100-4103 (1999).

Langnaese, K., et al., Cytogenet. Cell Genet. 94 (3-4), 233-240 (2001).

Images



The anti-MAGED2 C-term Antibody (Cat.#AP6177a) is used in Western blot to detect MAGED2 in A549 lysate.



Formalin-fixed and paraffin-embedded human cancer tissue reacted with the primary antibody, which was peroxidase-conjugated to the secondary antibody, followed by AEC staining. This data demonstrates the use of this antibody for immunohistochemistry; clinical relevance has not been evaluated. BC = breast carcinoma; HC = hepatocarcinoma.

Please note: All products are 'FOR RESEARCH USE ONLY. NOT FOR USE IN DIAGNOSTIC OR THERAPEUTIC PROCEDURES'.