

MMP20 Antibody (Center)

Purified Rabbit Polyclonal Antibody (Pab)

Catalog # AP6203a

Product Information

Application	IHC-P, WB, E
Primary Accession	O60882
Other Accession	NP_004762
Reactivity	Human
Host	Rabbit
Clonality	Polyclonal
Isotype	Rabbit IgG
Clone Names	RB2037/2038
Calculated MW	54387
Antigen Region	233-262

Additional Information

Gene ID	9313
Other Names	Matrix metalloproteinase-20, MMP-20, 3424-, Enamel metalloproteinase, Enamelysin, MMP20
Target/Specificity	This MMP20 antibody is generated from rabbits immunized with a KLH conjugated synthetic peptide between 233-262 amino acids from the Central region of human MMP20.
Dilution	IHC-P~~1:100~500 WB~~1:1000 E~~Use at an assay dependent concentration.
Format	Purified polyclonal antibody supplied in PBS with 0.09% (W/V) sodium azide. This antibody is prepared by Saturated Ammonium Sulfate (SAS) precipitation followed by dialysis against PBS.
Storage	Maintain refrigerated at 2-8°C for up to 2 weeks. For long term storage store at -20°C in small aliquots to prevent freeze-thaw cycles.
Precautions	MMP20 Antibody (Center) is for research use only and not for use in diagnostic or therapeutic procedures.

Protein Information

Name	MMP20
Function	Degrades amelogenin, the major protein component of the enamel matrix and two of the macromolecules characterizing the cartilage extracellular matrix: aggrecan and the cartilage oligomeric matrix protein (COMP). May

play a central role in tooth enamel formation. Cleaves aggrecan at the '360-Asn-|-Phe-361' site.

Cellular Location	Secreted, extracellular space, extracellular matrix
Tissue Location	Expressed specifically in the enamel organ.

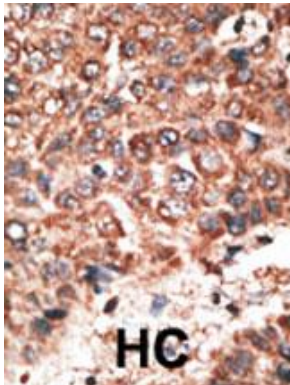
Background

MMP20 degrades amelogenin, the major protein component of the enamel matrix, as well as two of the macromolecules characterizing the cartilage extracellular matrix: aggrecan and the cartilage oligomeric matrix protein (COMP). MMP20 may play a central role in tooth enamel formation.

References

Llano, E., et al., Biochemistry 36(49):15101-15108 (1997).
Stracke, J.O., et al., FEBS Lett. 478 (1-2), 52-56 (2000).

Images



Formalin-fixed and paraffin-embedded human cancer tissue reacted with the primary antibody, which was peroxidase-conjugated to the secondary antibody, followed by DAB staining. This data demonstrates the use of this antibody for immunohistochemistry; clinical relevance has not been evaluated. BC = breast carcinoma; HC = hepatocarcinoma.

Please note: All products are 'FOR RESEARCH USE ONLY. NOT FOR USE IN DIAGNOSTIC OR THERAPEUTIC PROCEDURES'.