

MMP25 Antibody (C-term)

Purified Rabbit Polyclonal Antibody (Pab)

Catalog # AP6206a

Product Information

Application	WB, E
Primary Accession	Q9NPA2
Other Accession	NP_071913
Reactivity	Human, Mouse
Host	Rabbit
Clonality	Polyclonal
Isotype	Rabbit IgG
Clone Names	RB2043
Calculated MW	62554
Antigen Region	470-499

Additional Information

Gene ID	64386
Other Names	Matrix metalloproteinase-25, MMP-25, 3424-, Leukolysin, Membrane-type matrix metalloproteinase 6, MT-MMP 6, MTMMP6, Membrane-type-6 matrix metalloproteinase, MT6-MMP, MT6MMP, MMP25, MMP20, MMPL1, MT6MMP
Target/Specificity	This MMP25 antibody is generated from rabbits immunized with a KLH conjugated synthetic peptide between 470-499 amino acids from the C-terminal region of human MMP25.
Dilution	WB~~1:1000 E~~Use at an assay dependent concentration.
Format	Purified polyclonal antibody supplied in PBS with 0.09% (W/V) sodium azide. This antibody is prepared by Saturated Ammonium Sulfate (SAS) precipitation followed by dialysis against PBS.
Storage	Maintain refrigerated at 2-8°C for up to 2 weeks. For long term storage store at -20°C in small aliquots to prevent freeze-thaw cycles.
Precautions	MMP25 Antibody (C-term) is for research use only and not for use in diagnostic or therapeutic procedures.

Protein Information

Name	MMP25
Synonyms	MMP20, MMPL1, MT6MMP

Function	May activate progelatinase A.
Cellular Location	Cell membrane; Lipid-anchor, GPI-anchor; Extracellular side. Secreted, extracellular space, extracellular matrix
Tissue Location	Expressed predominantly in leukocytes, lung and spleen. Expressed also in colon carcinoma, astrocytoma and glioblastomas

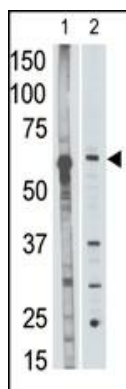
Background

Proteins of the matrix metalloproteinase (MMP) family are involved in the breakdown of extracellular matrix in normal physiological processes, such as embryonic development, reproduction, and tissue remodeling, as well as in disease processes, such as arthritis and metastasis. Most MMPs are secreted as inactive proproteins which are activated when cleaved by extracellular proteinases. However, MMP25 is a member of the membrane-type MMP (MT-MMP) subfamily; each member of this subfamily contains a potential transmembrane domain suggesting that these proteins are expressed at the cell surface rather than secreted. In addition, it is thought that this protein is activated intracellularly by furin-like enzymes. This protein activates MMP2 by cleavage. The gene has previously been referred to as MMP20 but has been renamed matrix metalloproteinase 25 (MMP25).

References

Matsuda, A., et al., J. Biol. Chem. 278(38):36350-36357 (2003).
Velasco, G., et al., Cancer Res. 60(4):877-882 (2000).
Nagase, H., et al., J. Biol. Chem. 274(31):21491-21494 (1999).
Pei, D., Cell Res. 9(4):291-303 (1999).
Kojima, S., et al., FEBS Lett. 480 (2-3), 142-146 (2000).

Images



The anti-MMP25 C-term Antibody (Cat.#AP6206a) is used in Western blot to detect MMP25 in mouse liver tissue lysate (lane 1) and HL60 cell lysate (lane 2) lysate.

Please note: All products are 'FOR RESEARCH USE ONLY. NOT FOR USE IN DIAGNOSTIC OR THERAPEUTIC PROCEDURES'.